

# SMS API (ActiveX COM) version 3

MOBITEK - SMS Gateway Development Kit

## Manual for System Integrator & Software Developer

---

### Table of Contents

Copyright.....	2
Disclaimer.....	2
Revision History.....	2
INTRODUCTION.....	3
BENEFITS.....	3
FEATURES.....	3
REFERENCING THE API.....	4
SECTION 1: API FUNCTIONS.....	5
1.1.InitModem (COM port, optional SIM PIN).....	5
1.2.ConnectToGSM () .....	5
1.3.ReadSMS ().....	5
1.4.SendSMSWC (mobile number, outgoing message) = True or False.....	5
1.5.SendSMSWC2 (mobile number, outgoing message) = True or False.....	5
1.6.DeliveryReportOn ().....	6
1.7.DeliveryReportOff ().....	6
1.8.GetDeliveryRerpot ().....	6
1.9.CloseModem () .....	6
SECTION 2: API PROPERTIES.....	7
2.1.Read SMS Properties.....	7
a)MN = Mobile number of sender.....	7
b)MSG = Message sent by the sender .....	7
c)SCTS = SMSC (SMS Centre) time stamp – time of the message received by SMSC in the format of "yy/mm/dd hh:mm:ss".....	7
d)SMSC = SMSC (SMS Centre) number.....	7
2.2.Send SMS Properties.....	7
a)MR = Message Reference Number.....	7
2.3.GetDeliveryRerpot ().....	8
a)DRFDate = date of SMS forwarded to recipient's mobile number by SMSC.....	8
b)DRFTIME = time of SMS forwarded to recipient's mobile number by SMSC.....	8
c)DRMNRRecipient = recipient's mobile number.....	8
d)DRMsgRef = Message Reference Number. Use this number to match with the property "MR" - message reference number generated after calling the SendSMSWC2() function.....	8
e)DRRDate = date of SMS received by SMSC.....	8
f)DRRTIME = time of SMS received by SMSC.....	8
g)DRStatus = status of the outgoing SMS, value can be:.....	8
= DELIVERED if SMS is delivered to recipient's mobile by SMSC.....	8
= UNDELIVERED if SMS is not delivered by SMSC.....	8
= UNKNOWN if status is unknown.....	8
SECTION 3: VISUAL BASIC SAMPLE.....	9
SECTION 4: DEPLOYMENT.....	13
SECTION 5: Terms and Conditions.....	13
SECTION 6: Support.....	13
APPENDIX 1: Using COM Components from Visual Studio .Net Directly.....	14

**MOBITEK** System Sdn .Bhd. (207015-D)

6th Floor, Suite 16, IOI Business Park, Persiaran Puchong Jaya Selatan, Bandar Puchong Jaya, Puchong 47100, Selangor, Malaysia.

Tel: 03-80644288 Fax: 03-80642109 Web: [www.mobitek.com.my](http://www.mobitek.com.my)

# SMS API (ActiveX COM) version 3

MOBITEK - SMS Gateway Development Kit

## Manual for System Integrator & Software Developer

---

### Copyright

Copyright © MOBITEK System Sdn. Bhd. 2006. All rights reserved. No part of this document may be reproduced, distributed, stored in a retrieval system or translated into any language, in any form or by any means, electronic, mechanical, magnetic, optical, photocopying, manual or otherwise, without the prior written permission of MOBITEK System Sdn. Bhd.

### Disclaimer

MOBITEK makes no representations or warranties with respect to the contents hereof and specifically disclaims any implied warranties of merchantability or fitness for any particular purpose. Further, MOBITEK reserves the right to revise this publication and to make changes from time to time in the contents hereof without obligation to notify any person of such revision or changes. Trademarks and Registered Trademarks Products and product names mentioned in this document may be trademarks or registered trademarks of their respective owners.

### Revision History

<b>EDITION</b>	<b>ISSUED DATE</b>	<b>REMARK</b>
1 <sup>st</sup>	1 <sup>st</sup> of September, 2005	Draft release
2 <sup>nd</sup>	12 <sup>th</sup> of March, 2006	
3 <sup>rd</sup>	13 <sup>th</sup> of April, 2006	
4 <sup>th</sup>	6 <sup>th</sup> of June, 2006	Verison 3.9
5 <sup>th</sup>	15 <sup>th</sup> of June, 2006	Release verison 3.10
6 <sup>th</sup>	28 <sup>th</sup> of July, 2006	Release version 3.11, benefits, features
7 <sup>th</sup>	27 <sup>th</sup> of September, 2006	Release version 3.11.1
8 <sup>th</sup>	26 <sup>th</sup> of November, 2006	<i>APPENDIX 1: Using COM Components from Visual Studio .Net Directly added</i>

**MOBITEK** System Sdn .Bhd. (207015-D)

6th Floor, Suite 16, IOI Business Park, Persiaran Puchong Jaya Selatan, Bandar Puchong Jaya, Puchong 47100, Selangor, Malaysia.

Tel: 03-80644288 Fax: 03-80642109 Web: [www.mobitek.com.my](http://www.mobitek.com.my)

# **SMS API (ActiveX COM) version 3**

## **MOBITEK - SMS Gateway Development Kit**

### **Manual for System Integrator & Software Developer**

---

#### **INTRODUCTION**

**API TYPE:** ActiveX component (Component Object Model) for Windows only

**ActiveX Name:** MobitekSMSAPI3.dll

**Version:** 3.11.1

**Requirements:**

- 1 System integrator, and software developer must possess programming skill, and knowledge in making reference to dll file.
- 2 Programming language that can use **SMS API version 3:**
  - 2.1 Visual Basic
  - 2.2 Visual Basic .Net
  - 2.3 Visual Studio .Net
  - 2.4 Visual C++
  - 2.5 Cold Fusion
  - 2.6 Any programming language that can call **MobitekSMSAPI3.dll**
- 3 The operating system must be Windows OS (98, ME, 2000, XP, and 2003)

**SMS API version 3** is part of the **SMS Gateway Development Kit (SMS GDK)**. System integrator, and software developer can choose any development kit in the **SMS GDK** to build their own SMS Gateway.

#### **BENEFITS**

The benefits to system integrator, and software developer in using **SMS API version 3** are:

1. rapid development of a SMS Gateway
2. full control of the message flow, business logic, and the features of SMS Gateway
3. can decide how to handle incoming message – trigger an event, or launch an external application
4. can decide where to store the incoming message – in database, in text, or in XML
5. can decide who should receive outgoing message, when to send, what to send
6. integrate SMS feature with external software application

#### **FEATURES**

1. connect GSM modem with PC/Server
2. allow SI/SD to input PIN to unlock SIM
3. check whether GSM modem is connected to GSM network
4. send SMS (maximum 160 characters, and in text format only)
5. receive SMS (in text format only)
6. turn on, and off the delivery status report
7. obtain delivery status report
8. disconnect GSM modem from PC/Server

**MOBITEK** System Sdn .Bhd. (207015-D)

6th Floor, Suite 16, IOI Business Park, Persiaran Puchong Jaya Selatan, Bandar Puchong Jaya, Puchong 47100, Selangor, Malaysia.

Tel: 03-80644288 Fax: 03-80642109 Web: [www.mobitek.com.my](http://www.mobitek.com.my)

# SMS API (ActiveX COM) version 3

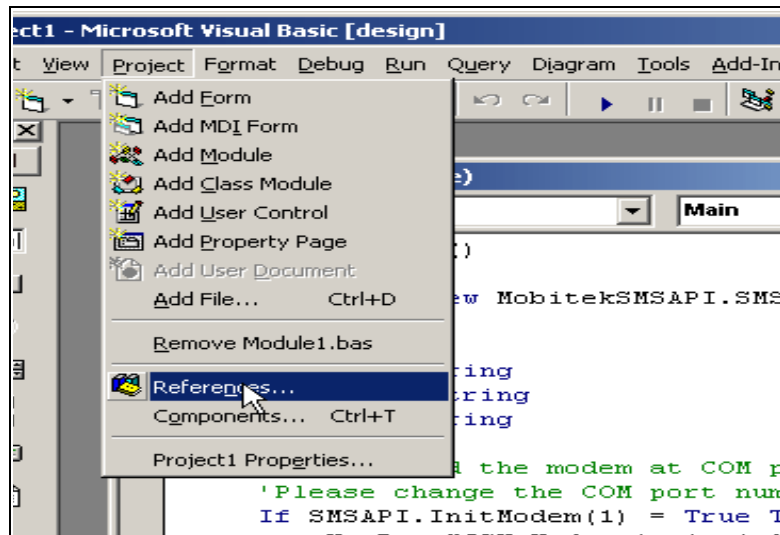
MOBITEK - SMS Gateway Development Kit

## Manual for System Integrator & Software Developer

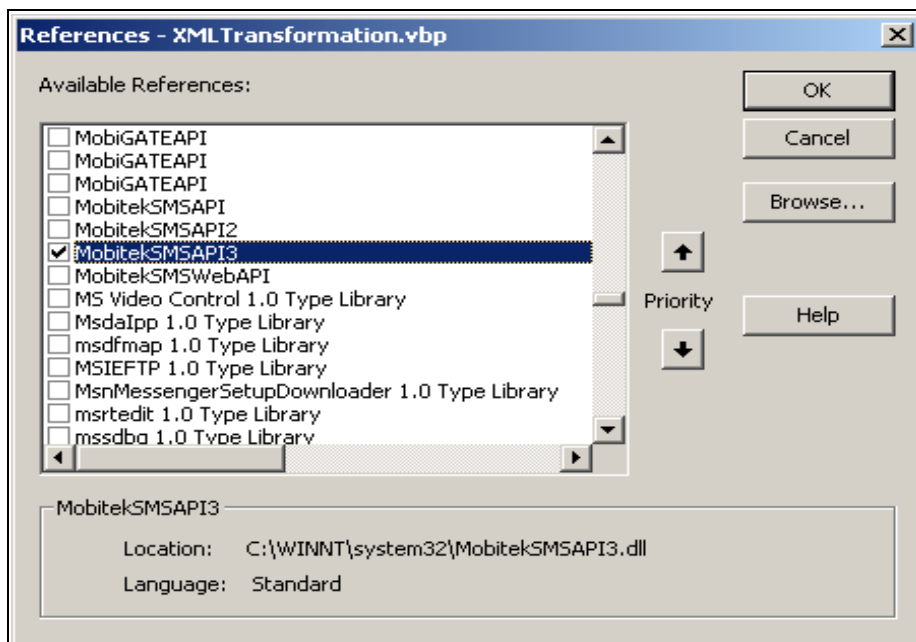
### REFERENCING THE API

Before you can start using the API, you must reference to the API. Below is a Visual Basic example:

1. Go to Project > references



2. References menu click MobitekSMSAPI



**MOBITEK** System Sdn .Bhd. (207015-D)

6th Floor, Suite 16, IOI Business Park, Persiaran Puchong Jaya Selatan, Bandar Puchong Jaya, Puchong 47100, Selangor, Malaysia.

Tel: 03-80644288 Fax: 03-80642109 Web: www.mobitek.com.my

# **SMS API (ActiveX COM) version 3**

**MOBITEK - SMS Gateway Development Kit**

## **Manual for System Integrator & Software Developer**

---

### **SECTION 1: API FUNCTIONS**

There are 9 main Application Programmable Interface (API) functions:

#### **1.1. InitModem (COM port, optional SIM PIN)**

- a) To initialise and to connect PC to the GSM Modem.
- b) Accepts 2 arguments
  - COM Port** – integer
  - SIM PIN** – string (optional)
- c) Return value is an integer:
  - = **0 (Fail)** if connection failed
  - = **1 (OK)** if connection is successfully established
  - = **2 (PINRequired)** if connection failed, because SIM PIN is required
  - = **3 (PINWrong)** if connection failed, because incorrect PIN is entered
  - = **4 (SIMBlocked)** if connection failed, because SIM card has been blocked
  - = **5 (SIMError)** if connection failed, because SIM card has problem or error

#### **1.2. ConnectToGSM ()**

- a) To check whether the GSM modem is connected to GSM network.
- b) Return value is:
  - = **TRUE** if connected, else
  - = **FALSE**

#### **1.3. ReadSMS ()**

- a) To read incoming SMS.
- b) Return value is:
  - = **TRUE** if successfully read or there is incoming message, else
  - = **FALSE** if there is no incoming message

#### **1.4. SendSMSWC (mobile number, outgoing message) = True or False**

- a) To send out SMS using Wavecom or iTegno GSM Modem.
- b) Return value is:
  - = **TRUE** if SMS is successfully sent, else
  - = **FALSE**

#### **1.5. SendSMSWC2 (mobile number, outgoing message) = True or False**

- a) To send SMS with Delivery Status Report (to be used by Wavecom and iTegno GSM modem only)

b) Return value is:

= **TRUE** if SMS is successfully sent, else

= **FALSE**

c) You must call the **DeliveryReportOn()** function first before sending out SMS and getting delivery status report

#### 1.6. DeliveryReportOn ()

a) To turn ON the SMS delivery status report.

b) Return value is:

= **TRUE** if it is successfully turn on, else

= **FALSE**

#### 1.7. DeliveryReportOff ()

a) To turn OFF the SMS delivery status report.

b) Return value is:

= **TRUE** if it is successfully turn off, else

= **FALSE**

#### 1.8. GetDeliveryRerpot ()

a) To get delivery status report.

b) Return value is:

= **TRUE** if there is delivery report, else

= **FALSE** if there is no delivery report

c) You must call the **DeliveryReportOn()** function first before sending out SMS and getting delivery status report

#### 1.9. CloseModem ()

a) To close the connection from PC to modem

b) Return value is:

= **TRUE** if ok, else

= **FALSE**

# **SMS API (ActiveX COM) version 3**

**MOBITEK - SMS Gateway Development Kit**

## **Manual for System Integrator & Software Developer**

---

### **SECTION 2: API PROPERTIES**

Properties are related to the following API functions:

#### **2.1. Read SMS Properties**

When *ReadSMS ()* returns *TRUE*, then retrieve values from the following properties:

- a) MN = Mobile number of sender**
- b) MSG = Message sent by the sender**
- c) SCTS = SMSC (SMS Centre) time stamp – time of the message received by SMSC in the format of "yy/mm/dd hh:mm:ss"**
- d) SMSC = SMSC (SMS Centre) number**

No need to retrieve the above values if *ReadSMS()* return *FALSE*

#### **2.2. Send SMS Properties**

When *SendSMSWC2()* returns *TRUE*, then retrieve value from the following property:

- a) MR = Message Reference Number**
  - *MR* is automatically generated by SMSC (SMS Centre) upon successfully calling the *SendSMSWC2()* function as described in **Section 1.5**. Use this number to match with property *DRMsgRef* - number from the delivery status report as described in **Section 2.3.d)**
  - The *MR* has a range of 0 to 255. And it is incremental. Once the number reaches 255, it will start from 0 and increased by 1 for each SMS successfully sent
  - No need to retrieve *MR* if *SendSMSWC2()* return *FALSE*

### 2.3. GetDeliveryRerpot ()

When *GetDeliveryRerpot ()* returns *TRUE*, then retrieve values from the following properties:

- a) **DRFDate = date of SMS forwarded to recipient's mobile number by SMSC**
- b) **DRFTime = time of SMS forwarded to recipient's mobile number by SMSC**
- c) **DRMNRRecipient = recipient's mobile number**
- d) **DRMsgRef = Message Reference Number. Use this number to match with the property "MR" - message reference number generated after calling the *SendSMSWC2()* function**
- e) **DRRDate = date of SMS received by SMSC**
- f) **DRRTime = time of SMS received by SMSC**
- g) **DRStatus = status of the outgoing SMS, value can be:**
  - = DELIVERED if SMS is delivered to recipient's mobile by SMSC**
  - = UNDELIVERED if SMS is not delivered by SMSC**
  - = UNKNOWN if status is unknown**

- The following statement illustrates the above properties when the outgoing SMS is successfully delivered to the recipient, i.e. **DRStatus = DELIVERED** :

*The status of your outgoing SMS with reference number, DRMsgRef, is DRStatus.*

*Your outgoing SMS was received by the SMS Centre on DRRDate, at DRRTime, and was successfully delivered to DRMNRRecipient, on DRFDate, at DRFTime.*

- The following statement illustrates the above properties when the outgoing SMS is **NOT** successfully delivered to the recipient, i.e. **DRStatus = UNDELIVERED** :

*The status of your outgoing SMS with reference number, DRMsgRef, is DRStatus.*

*Your outgoing SMS was received by the SMS Centre on DRRDate, at DRRTime, and was NOT successfully delivered to DRMNRRecipient.*

- The following statement illustrates the above properties when the outgoing SMS does not have any status, i.e. **DRStatus = UNKNOWN** :

*The status of your outgoing SMS with reference number, DRMsgRef, is DRStatus.*

*Your outgoing SMS was received by the SMS Centre on DRRDate, at DRRTime, and no status is available.*

# SMS API (ActiveX COM) version 3

MOBITEK - SMS Gateway Development Kit

## Manual for System Integrator & Software Developer

---

### SECTION 3: VISUAL BASIC SAMPLE

The following example demonstrates using Visual Basic to call the API

```
Public Sub Main()
```

```
    Dim SMSAPI3 As New MobitekSMSAPI3.SMSAPI3
```

```
    Dim intModemStatus As Integer
```

```
    Dim strHP As String
```

```
    Dim strMsg As String
```

```
    Dim strTS As String
```

```
    Dim intLoop As Integer
```

'Initialised the modem at COM port 7 with PIN "1234" i.e. to establish connection btw. PC and GSM modem. Please change the COM port number and PIN accordingly, please refer to the Installation Guide on how to find the COM Port number

```
    intModemStatus = SMSAPI3.InitModem(7, "1234")
```

```
    Select Case intModemStatus
```

```
        Case 0
```

```
            MsgBox "GSM Modem Not Connected!"
```

```
            Exit Sub
```

```
        Case 1
```

```
            MsgBox "GSM Modem Connected!"
```

```
        Case 2
```

```
            MsgBox "PIN Required!"
```

```
            Exit Sub
```

```
        Case 3
```

```
            MsgBox "Incorrect PIN entered! Warning after 3 times of incorrect PIN entered, your SIM card will be blocked by TELCO!"
```

```
            Exit Sub
```

```
        Case 4
```

```
            MsgBox "Your SIM card is blocked by TELCO!"
```

```
            Exit Sub
```

```
        Case 5
```

```
            MsgBox "Your SIM card has problem!"
```

```
            Exit Sub
```

```
        Case Else
```

```
            MsgBox "GSM Modem Not Connected!"
```

```
            Exit Sub
```

```
    End Select
```

'You can use this API function anywhere in your code to check the modem's

**MOBITEK** System Sdn .Bhd. (207015-D)

6th Floor, Suite 16, IOI Business Park, Persiaran Puchong Jaya Selatan, Bandar Puchong Jaya, Puchong 47100, Selangor, Malaysia.

Tel: 03-80644288 Fax: 03-80642109 Web: [www.mobitek.com.my](http://www.mobitek.com.my)

# SMS API (ActiveX COM) version 3

MOBITEK - SMS Gateway Development Kit

## Manual for System Integrator & Software Developer

---

connection to GSM network

```
If SMSAPI3.ConnectToGSM = True Then
```

```
    MsgBox "GSM modem is connected to GSM Network."
```

```
Else
```

```
    MsgBox "GSM modem is disconnected from the GSM Network. Please re-  
initialised GSM modem."
```

```
    'Close modem connection to PC
```

```
    SMSAPI3.CloseModem
```

```
    Set SMSAPI3 = Nothing
```

```
Exit Sub
```

```
End If
```

```
'Turn on the delivery status report
```

```
'You must call "DeliveryReportOn" before calling "SendSMSWC2" function, or  
else there will be no delivery status
```

```
If SMSAPI3.DeliveryReportOn Then
```

```
    'If it is on, then send out SMS
```

```
    If SMSAPI3.SendSMSWC2("+60163311600","Testing!") = True Then
```

```
        'If SMS send successfully, get the message reference number  
generated by SMSC you can use this number to match with with the number from the  
delivery status report
```

```
        MsgBox "SMS send!" & " Message ref. no.: " & SMSAPI3.MR
```

```
        intLoop = 0
```

```
        'You may need to loop here as the delivery status report takes time  
to arrive from SMSC
```

```
        Do
```

```
            'Check if there's delivery status report, if yes then ...
```

```
            If SMSAPI3.GetDeliveryReport = True Then
```

```
                'If delivery status report is "DELIVERED" then ...
```

```
                If SMSAPI3.DRStatus = Delivered Then
```

```
                    MsgBox "The outgoing SMS with reference number: " &  
SMSAPI3.DRMsgRef & vbCrLf & _
```

```
                    "was received by the SMSC" & vbCrLf & _
```

```
                    "on: " & SMSAPI3.DRRDate & vbCrLf & _
```

```
                    "at: " & SMSAPI3.DRRTime & vbCrLf & _
```

```
                    "and was successfully delivered to: " &
```

**MOBITEK** System Sdn .Bhd. (207015-D)

6th Floor, Suite 16, IOI Business Park, Persiaran Puchong Jaya Selatan, Bandar Puchong Jaya, Puchong 47100, Selangor, Malaysia.

Tel: 03-80644288 Fax: 03-80642109 Web: www.mobitek.com.my

# SMS API (ActiveX COM) version 3

MOBITEK - SMS Gateway Development Kit

## Manual for System Integrator & Software Developer

---

```
SMSAPI3.DRMNRecipient & vbCrLf & _
    "on: " & SMSAPI3.DRFDate & vbCrLf & _
    "at: " & SMSAPI3.DRFTIME

SMSAPI3.DeliveryReportOff

Exit Do

'else if delivery status report is "UNDELIVERED" then ...
ElseIf SMSAPI3.DRStatus = Undelivered Then
    MsgBox "The outgoing SMS with reference number: " &
SMSAPI3.DRMsgRef & vbCrLf & _
    "was received by the SMSC" & vbCrLf & _
    "on: " & SMSAPI3.DRRDate & vbCrLf & _
    "at: " & SMSAPI3.DRRTime & vbCrLf & _
    "was NOT successfully delivered to: " &
SMSAPI3.DRMNRecipient

Exit Do

'else if delivery status report is "UNKNOWN" then ...
ElseIf SMSAPI3.DRStatus = Unknown Then
    MsgBox "The outgoing SMS with reference number: " &
SMSAPI3.DRMsgRef & vbCrLf & _
vbCrLf & _
    "was received by the SMSC on: " & SMSAPI3.DRRDate &
vbCrLf & _
    "at: " & SMSAPI3.DRRTime & vbCrLf & _
    "has a delivery status --- UNKNOWN"

Exit Do

End If
End If

intLoop = 1 + intLoop

'Specify how many times you want the code to loop and get the
delivery status report Or you can call the API function --- GetDeliveryReport
--- anywhere in your code in later stage, use the "MR" number generated when you
called "SMSWC2" function to match with the "DRMsgRef" generated by calling the
"GetDeliveryReport" function.
```

**MOBITEK** System Sdn .Bhd. (207015-D)

6th Floor, Suite 16, IOI Business Park, Persiaran Puchong Jaya Selatan, Bandar Puchong Jaya, Puchong 47100, Selangor, Malaysia.

Tel: 03-80644288 Fax: 03-80642109 Web: [www.mobitek.com.my](http://www.mobitek.com.my)

# SMS API (ActiveX COM) version 3

MOBITEK - SMS Gateway Development Kit

## Manual for System Integrator & Software Developer

---

```
Loop While intLoop <= 10
```

```
Else
```

```
    MsgBox "Not Send!"
```

```
End If
```

```
End If
```

```
'To read incoming SMS
```

```
'If there is incoming SMS, then ...
```

```
If SMSAPI3.ReadSMS = True Then
```

```
    MsgBox "Incoming Message: " & SMSAPI3.MSG
```

```
    MsgBox "Sender Number: " & SMSAPI3.MN
```

```
    MsgBox "SMSC Date & Time Stamp: " & SMSAPI3.SCTS
```

```
    MsgBox "SMSC Number: " & SMSAPI3.SMSC
```

```
'else no incoming SMS
```

```
Else
```

```
    MsgBox "No incoming SMS"
```

```
End If
```

```
'Close modem connection to PC
```

```
If SMSAPI3.CloseModem = True Then
```

```
    MsgBox "GSM Modem Closed!"
```

```
    'You must closed the SMS API object AFTER closing modem port
```

```
    Set SMSAPI3 = Nothing
```

```
Else
```

```
    MsgBox "GSM Modem not closed!"
```

```
End If
```

```
End Sub
```

**MOBITEK** System Sdn .Bhd. (207015-D)

6th Floor, Suite 16, IOI Business Park, Persiaran Puchong Jaya Selatan, Bandar Puchong Jaya, Puchong 47100, Selangor, Malaysia.

Tel: 03-80644288 Fax: 03-80642109 Web: [www.mobitek.com.my](http://www.mobitek.com.my)

# SMS API (ActiveX COM) version 3

MOBITEK - SMS Gateway Development Kit

## Manual for System Integrator & Software Developer

---

### **SECTION 4: DEPLOYMENT**

When you want to deploy your SMS application on another PC, you need to run the setup file (**setup.exe**) for **MobitekSMSAPI3.dll** which is located in the CD at "**SMS API v3**" folder. Or you can use an *Installer* (e.g. Wise Installer, MSI etc.) to include the setup.exe with your application.

### **SECTION 5: TERMS AND CONDITIONS**

- 5.1 **SMS API version 3** is given free of charge. It is completely free of any registration, licensing or deployment fees. It may be deployed freely for use with any third-party software, whether for commercial purpose or not. Therefore, no warranty and support is given.
- 5.2 **SMS API version 3** must be used together with the GSM Modem supplied.
- 5.3 MOBITEK System shall not be held liable for any loss or damaged as a result of using the **SMS API version 3**.

### **SECTION 6: SUPPORT**

All GSM modems purchased from us comes with free 12 months **e-mail support** with the following terms and conditions:

- 6.1 We support matters related to modem.
- 6.2 We support only the **API Functions** as described in **Section 1**, and **API Properties** as described in **Section 2**.
- 6.3 Support does not cover technical issues such as programming (e.g. how do I write a programme to send out SMS) and integration (e.g. how do I write a programme that talks to a database).

All e-mail must contain the following information:

1. **Company name**
2. **Invoice number**
3. **Description of problem**

and send it to [support@mobitek.com.my](mailto:support@mobitek.com.my) We will response within **3 working days**.

After 12 months, a support fee is chargeable.

**MOBITEK** System Sdn .Bhd. (207015-D)

6th Floor, Suite 16, IOI Business Park, Persiaran Puchong Jaya Selatan, Bandar Puchong Jaya, Puchong 47100, Selangor, Malaysia.

Tel: 03-80644288 Fax: 03-80642109 Web: [www.mobitek.com.my](http://www.mobitek.com.my)

# SMS API (ActiveX COM) version 3

MOBITEK - SMS Gateway Development Kit

## Manual for System Integrator & Software Developer

---

### **APPENDIX 1: Using COM Components from Visual Studio .Net Directly**

The following article is from <http://msdn.microsoft.com/library/default.asp?url=/library/en-us/dndotnet/html/callcomcomp.asp>. It describes how you can call **ActiveX COM** from **.Net**:

*As a .NET developer, you also have the option of using COM components directly. At least, that's what it looks like, although you're programmatically still using a RCW to get to objects in unmanaged code. If you're working within a Visual Basic .NET project, you can follow these steps to add a reference to a COM component:*

1. Click **Project**, and then click **Add Reference**.
2. In the **Add Reference** dialog box, click the **COM** tab.
3. Select the type library you wish to use from the list and click **Select**, or use the **Browse** button to locate a component that's not listed. The selected components will be added to the lower listview in the dialog box.
4. Click **OK** to create RCWs for the selected type libraries in your Visual Basic .NET project.

*When you do this, you'll find that Visual Basic .NET actually creates a DLL in your project's /Bin folder, with a name derived from the original COM component name. For example, if you reference BackEnd.dll version 2.0 in this manner, Visual Basic .NET will create the RCW in the file Interop.BackEnd\_2\_0.dll.*

**MOBITEK** System Sdn .Bhd. (207015-D)

6th Floor, Suite 16, IOI Business Park, Persiaran Puchong Jaya Selatan, Bandar Puchong Jaya, Puchong 47100, Selangor, Malaysia.

Tel: 03-80644288 Fax: 03-80642109 Web: [www.mobitek.com.my](http://www.mobitek.com.my)