

# MOBITEK® STK ENGINE

## User's Guide

---

### Table of Contents

1. REVISION HISTORY.....	2
2. COPYRIGHT.....	2
3. TRADEMARKS.....	2
4. DISCLAIMER.....	2
5. ACKNOWLEDGEMENT.....	2
6. LICENCE AGREEMENT.....	2
7. DEFINITION.....	3
8. INTRODUCTION.....	3
9. HOW IT WORKS?.....	3
10. FEATURES.....	4
11. SYSTEM REQUIREMENTS.....	4
12. BENEFITS.....	4
13. LIMITATIONS.....	4
14. INSTALLATION GUIDE.....	4
15. SUPPORT.....	5
16. RELEASE NOTES.....	5
17. FAQ.....	5
18. APPENDIX 1 – DETAIL STEP BY STEP GUIDE.....	6

## 1. REVISION HISTORY

EDITION	ISSUED DATE	REMARK
1 <sup>st</sup>	15 <sup>th</sup> of December, 2012	MOBITEK STK ENGINE version 4.1 (beta) released
2 <sup>nd</sup>	26 <sup>th</sup> of January, 2013	MOBITEK STK ENGINE version 4.2 (beta) released
3 <sup>rd</sup>	4 <sup>th</sup> of April, 2014	MOBITEK STK ENGINE version 4.3 (beta) released
4 <sup>th</sup>	22 <sup>nd</sup> of August, 2014	"APPENDIX 1 – DETAIL STEP BY STEP GUIDE" added

## 2. COPYRIGHT

**Copyright © 2012 MOBITEK System Sdn. Bhd. All rights reserved.**

No part of this document may be reproduced, distributed, stored in a retrieval system or translated into any language, in any form or by any means, electronic, mechanical, magnetic, optical, photocopying, manual or otherwise, without the prior written permission of MOBITEK System Sdn. Bhd.

## 3. TRADEMARKS

**MOBITEK®** is a registered trademark owns by MOBITEK System Sdn. Bhd.

Product names, logos, brands and other trademarks referred in this document are the property of their respective trademark holders and are used only to directly describe the products being provided. \

## 4. DISCLAIMER

MOBITEK makes no representations or warranties with respect to the contents hereof and specifically disclaims any implied warranties of merchantability or fitness for any particular purpose.

Furthermore, MOBITEK reserves the right to revise this publication and to make changes from time to time in the contents hereof without obligation to notify any person of such revision or changes.

## 5. ACKNOWLEDGEMENT

We like to extend our appreciation to following persons:-

1. Mr. Chai Yick Loong for contributing to the development of the **MOBITEK®** STK ENGINE.
2. Ms. Sarini for revising the manual.

## 6. LICENCE AGREEMENT

1. **MOBITEK®** STK ENGINE version 4.x (hereafter refer as "engine") is at beta phase. Therefore, there will be some bugs and it is not recommended to use in a production or live environment. It is recommended to use this engine for the purpose of research and development.
2. **Engine** is given away Free Of Charge when **MOBITEK®** Q24 STK MODEM (hereafter refer as "modem") is purchased from MOBITEK System Sdn. Bhd. (hereafter refer as "MOBITEK"). It is free from any registration, licensing or deployment fees. It may be deployed freely for commercial or non-commercial use.
3. **Engine** must be used with **modem** supplied by **MOBITEK**.
4. **MOBITEK** may or may not require user to pay for the licencing fee for the final version.

**MOBITEK** System Sdn .Bhd. (207015-D)

6th Floor, Suite 16, IOI Business Park, Persiaran Puchong Jaya Selatan, Bandar Puchong Jaya, Puchong 47170, Selangor, Malaysia.

Tel: +603-80644288 Fax: +603-80642109 Web: [www.mobitek.com.my](http://www.mobitek.com.my)

5. The **engine** is supplied on a "as-is" basis as well as:-
  - a) without any technical support;
  - b) without warranty of any kind, express, implied or otherwise;
  - c) user must bear all risks associate with the use of the **engine**; and
  - d) **MOBITEK** must not be held liable for any data loss, damages, loss of profits or any other kind of losses associated with the use of the **engine**.
6. You have the ability to give feedback about the **engine** to **MOBITEK** by writing to [support2007@mobitek.com.my](mailto:support2007@mobitek.com.my) However, **MOBITEK** may or may not provide any fix for the **engine**.

## 7. DEFINITION

1. SIM Application Toolkit: STK

## 8. INTRODUCTION

**MOBITEK**® STK ENGINE is a software or application that will automate the process of selecting the menu item in the SIM Application Toolkit (STK). It is especially developed for the air-time reload proces.

The menu selection process is script/text based, in other words, no coding is needed.

## 9. HOW IT WORKS?

**MOBITEK**® STK ENGINE will check for "ini" file in the "New" folder, process the "ini" file.

Menu selection is based on the "ini" file.

For example, to automate Maxis E-Load ([http://www.mobitek.com.my/SIMToolKit/STK\\_Maxis.html](http://www.mobitek.com.my/SIMToolKit/STK_Maxis.html)), user just need to compose a "maxis.ini" file such as:-

```
[MENU]
1 = 1
2 = 1
3 = 0126618273
4 = 5
5 = 5
6 = 0413
7 = OK
```

On 1<sup>st</sup> menu, **MOBITEK**® STK ENGINE will select item number "1" which is "Maxis E-Load".

On 2<sup>nd</sup> menu, **MOBITEK**® STK ENGINE will select item number "1" which is "Reload".

On 3<sup>rd</sup> menu, **MOBITEK**® STK ENGINE will enter the customer's mobile number "0126618372".

On 4<sup>th</sup> menu, **MOBITEK**® STK ENGINE will select "enter amount".

On 5<sup>th</sup> menu, **MOBITEK**® STK ENGINE will enter "5" which is RM5.

On 6<sup>th</sup> menu, **MOBITEK**® STK ENGINE will enter the pin number of the dealer – "0413".

On 7<sup>th</sup> menu, **MOBITEK**® STK ENGINE will enter "OK" to confirm the transaction.

## 10. FEATURES

User do not need to write any code.

User need only to write a script in the form of “ini” file.

## 11. SYSTEM REQUIREMENTS

1. Windows OS: XP, Server 2003, Vista, Server 2008, Windows 7
2. **MOBITEK®** Q24 STK MODEM.
3. **MOBITEK®** STK API version 5 (MobitekSTK5.dll)
4. Dealer's or Retailer's SIM card that contains air-time reload menu or STK.

## 12. BENEFITS

1. No coding is required.
2. **MOBITEK®** STK ENGINE works in conjunction with your existing SMS software and **MOBITEK®** Q24 STK MODEM.

## 13. LIMITATIONS

## 14. INSTALLATION GUIDE

1. First, make sure that the **MOBITEK®** STK API version 5 (MobitekSTK5.dll) has been installed.
2. Install a copy of **MOBITEK®** STK ENGINE for each **MOBITEK®** Q24 STK MODEM. Refer to table for illustration:-

<b>MOBITEK®</b> Q24 STK MODEM	<b>Installer for MOBITEK®</b> STK ENGINE	<b>Installation Path</b>
1 <sup>st</sup> unit	Setup-MOBITEK STK ENGINE 1.exe	C:\Program Files\MOBITEK\STK Engine 1\STK Engine 1.exe
2 <sup>nd</sup> unit	Setup-MOBITEK STK ENGINE 2.exe	C:\Program Files\MOBITEK\STK Engine 2\STK Engine 2.exe
3 <sup>rd</sup> unit	Setup-MOBITEK STK ENGINE 3.exe	C:\Program Files\MOBITEK\STK Engine 3\STK Engine 3.exe
4 <sup>th</sup> unit	Setup-MOBITEK STK ENGINE 4.exe	C:\Program Files\MOBITEK\STK Engine 4\STK Engine 4.exe
...	...	...
N <sup>th</sup> unit	Setup-MOBITEK STK ENGINE N.exe	C:\Program Files\MOBITEK\STK Engine N\STK Engine N.exe

3. Installation process will stop if **MOBITEK®** STK API version 5 (MobitekSTK5.dll) is not found.
4. Create a new “ini” file, e.g. “test.ini”, place it in the “New” folder”, e.g. “C:\Program Files\MOBITEK\STK Engine 1\New”.
5. Goto “Start > All Programs > MOBITEK STK ENGINE > STK ENGINE 1”

- a) In “COM Port”, enter the port number where **MOBITEK®** Q24 STK MODEM is connected.
- b) Click “Start” button to begin the automation process.

## 15. SUPPORT

Please write to [support2010@mobitek.com.my](mailto:support2010@mobitek.com.my) and include the following:-

1. Company name : (as stated in the invoice)
2. Invoice number : (can also be obtained from the white label located at the back of the product)
3. Description of problem: (please fill in)
4. Attach screen capture: (if there are any user interface, pop-up message, etc.)
5. Attach the “Log.txt” file.
6. Attach “ini” file that is in the “Done” folder.

## 16. RELEASE NOTES

1. Version 4.1 (beta)
2. Version 4.2 (beta)
  - a) check if the application is already running or not
  - b) to improve GUI

## 17. FAQ

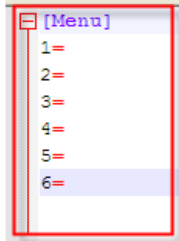
*Last updated on 10<sup>th</sup> of April, 2014*

1. Q: In the “ini” file of **STK ENGINE**, how can I call function **STKAPI.SMSSentDisplay()** ?  
A: The engine will automatically called the function **STKAPI.SMSSentDisplay()**. You do not need to specify this step in the “ini” file.

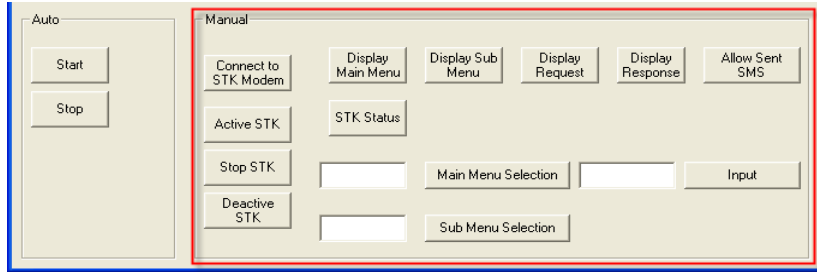
WRONG	CORRECT
[MENU]	[MENU]
1 = 129	1 = 129
2 = 2	2 = 2
3 = 2	3 = 2
4 = 1	4 = 1
5 = OK	5 = OK
6 = 0000	6 = 0000
7 = OK	7 = OK
8 = STKAPI.SMSSentDisplay	

### 18. APPENDIX 1 – DETAIL STEP BY STEP GUIDE

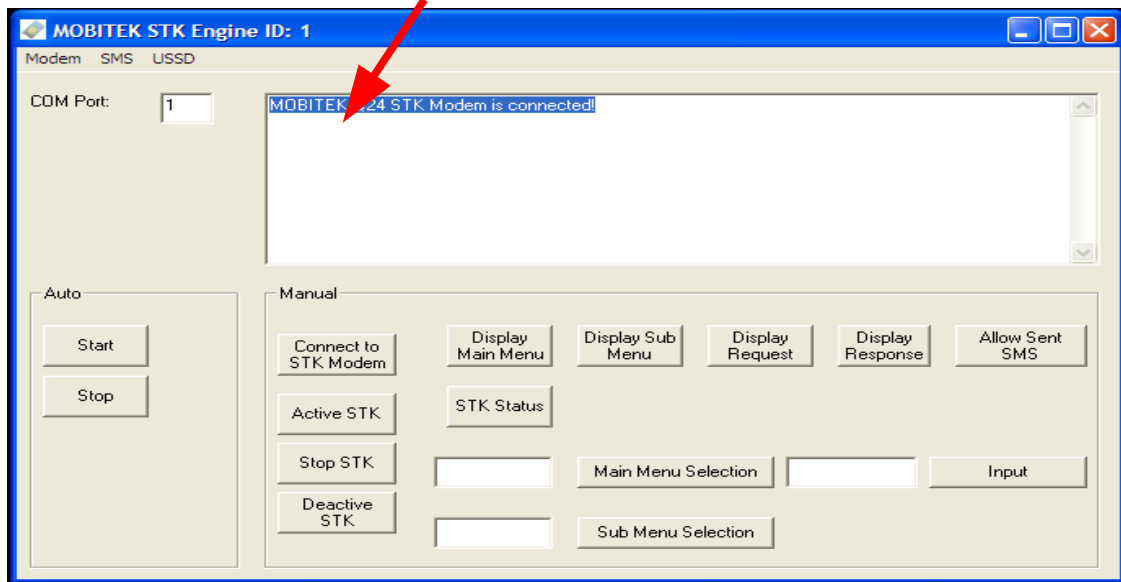
1. Run the **Mobitek STK Engine 1**.
2. Open the Notepad ++ to create a “.ini” file.
3. Rename the “.ini” file to “test.ini” and save it into (C:/Program Files/MOBITEK/New)
4. Inside the “.ini” file write [MENU] and number. Please see below for your info.



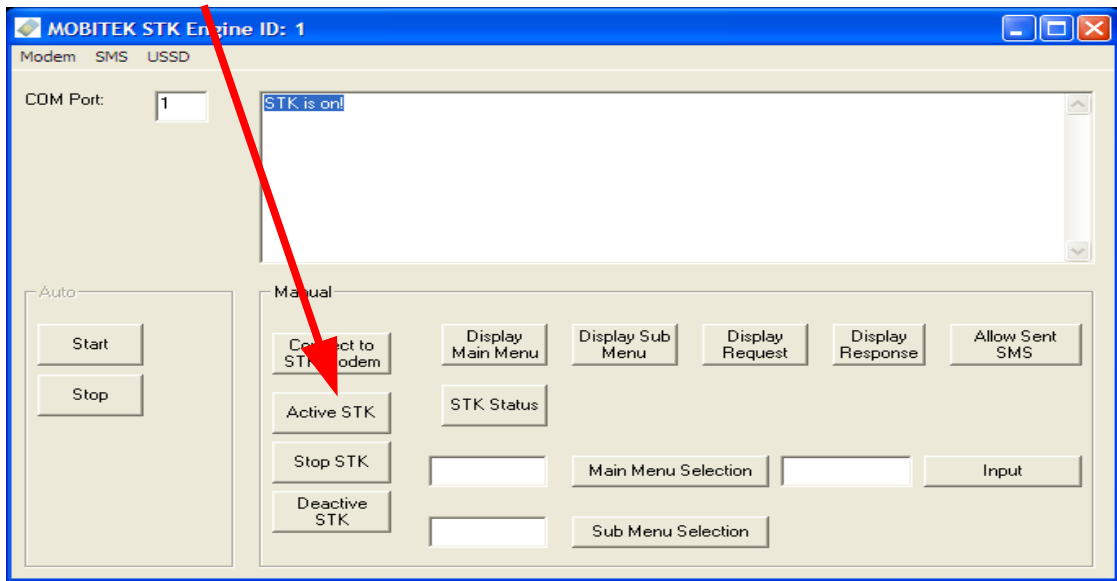
5. To know how to add number in **image** upstairs. We have to do manual selection first.



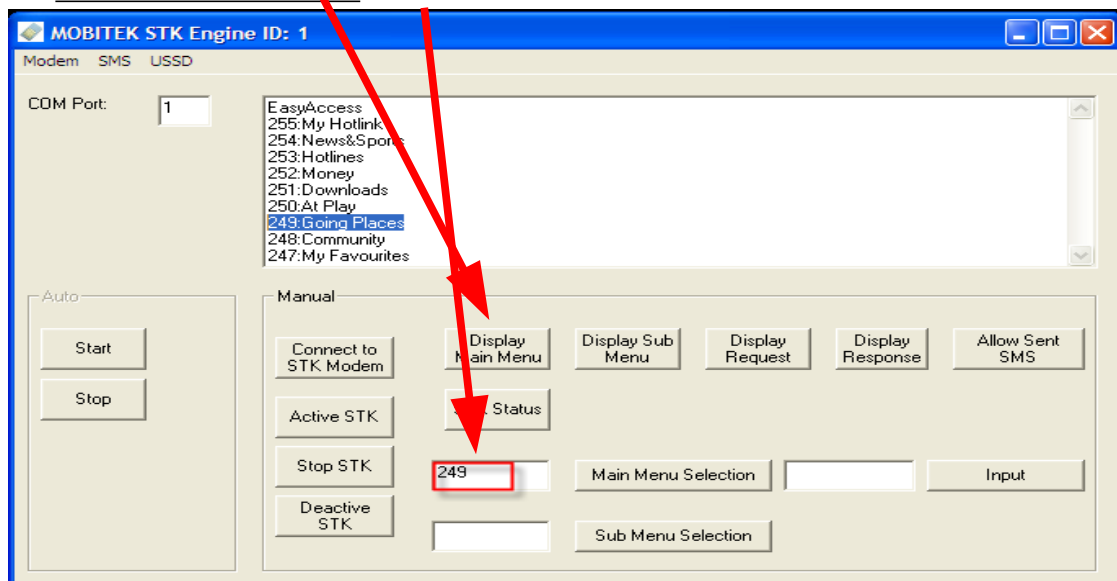
6. Write the COM Port no into COM Port Text box. Connect the MOBITEK STK Engine with click “**Connect to STK Modem**”. Text Box will show “MOBITEK Q24 STK Modem is connected”.



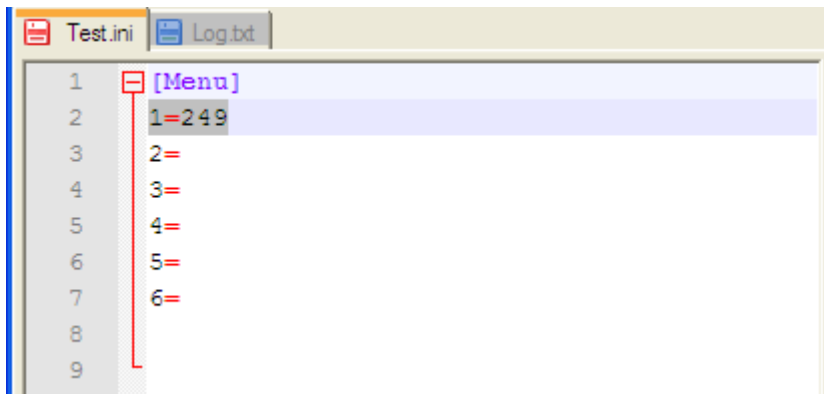
- 7. Click **“Active STK”** to activate the STK and Text Box will show **“STK is on!”**.



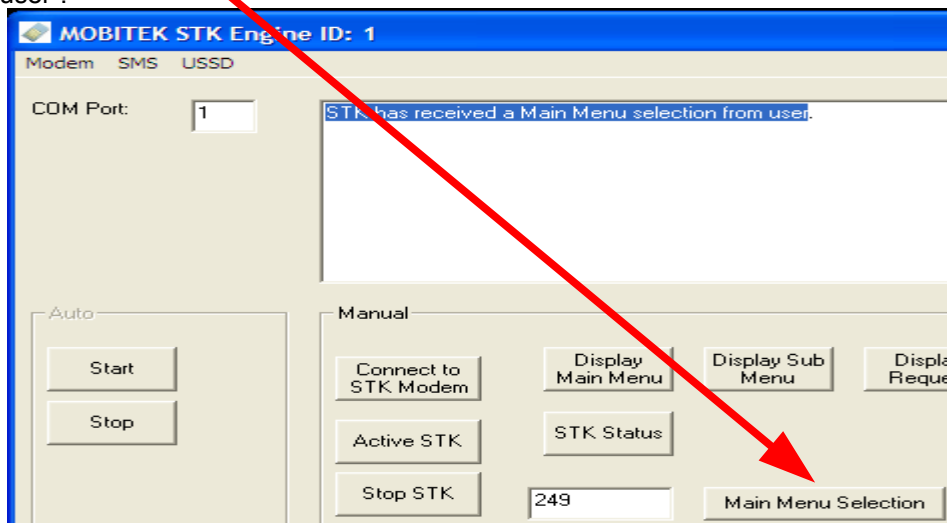
- 8. Click **Display Main Menu** and choose either one menu from list in text box. Type the number menu into text Main Menu Selection.



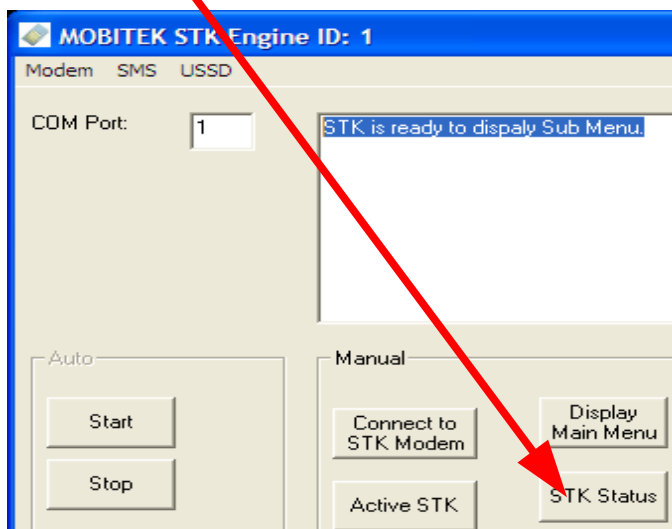
9. Write the number in “test.ini” file.



10. Click **Main Menu Selection**. Text box will be show “STK has received a Main Menu Selection from user”.

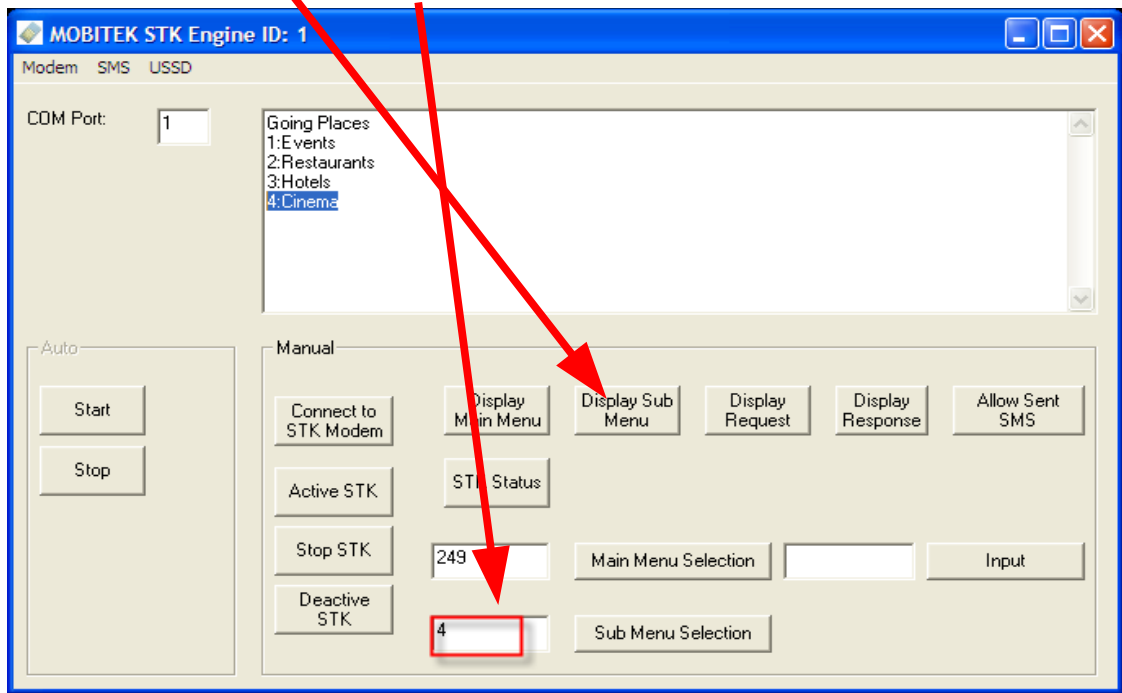


11. Click **STK Status**. Text box will be show “STK is ready to display sub menu.”

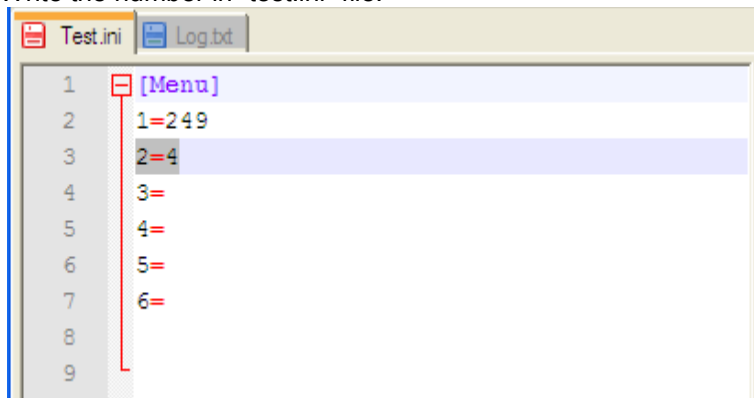




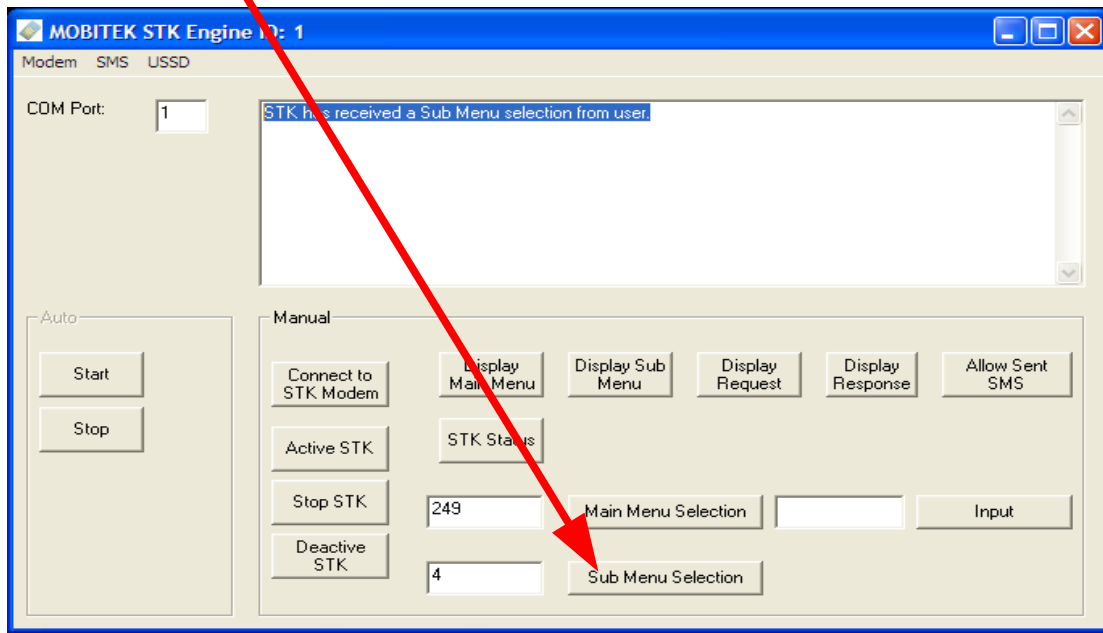
12. Click **Display Sub Menu** and choose either one menu from list. Type the number menu into text Sub Menu Selection.



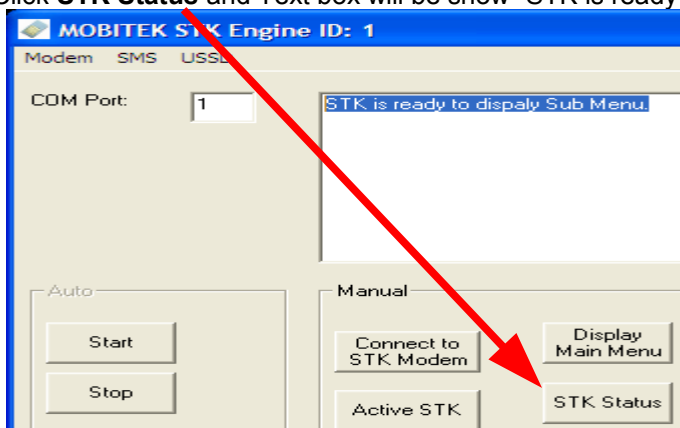
13. Write the number in "test.ini" file.



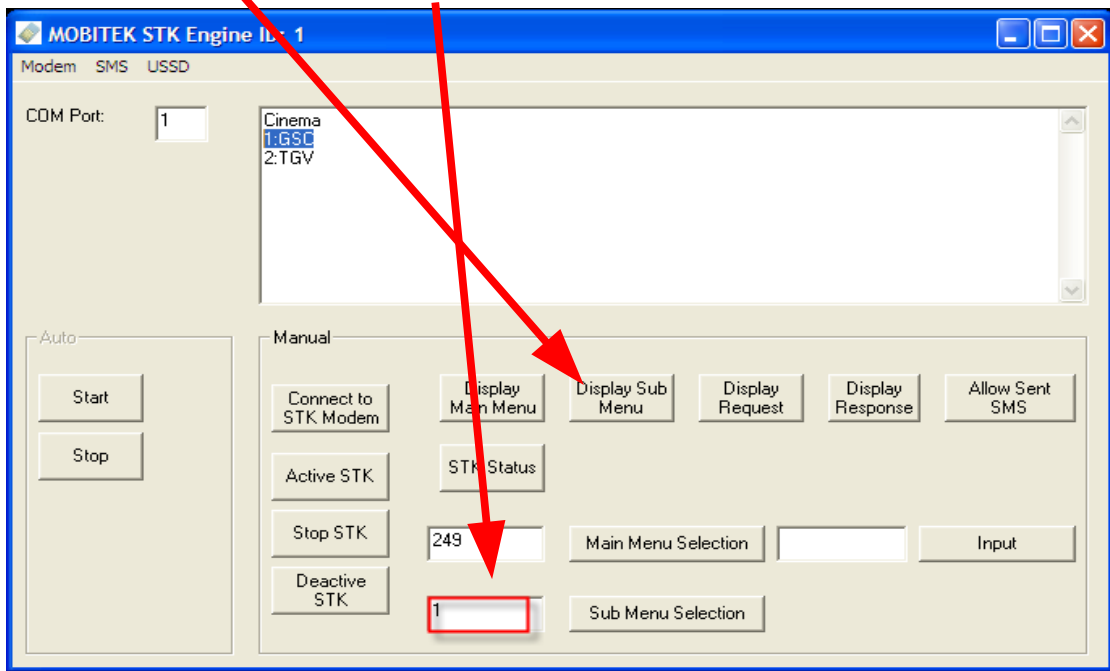
- 14. Click **Sub Menu Selection** and Text box will be show “STK has received a Sub Menu Selection from user”.



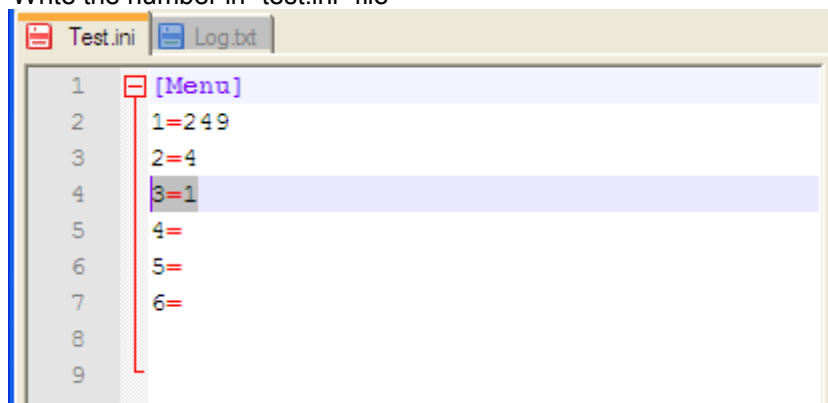
- 15. Click **STK Status** and Text box will be show “STK is ready to display sub menu.”



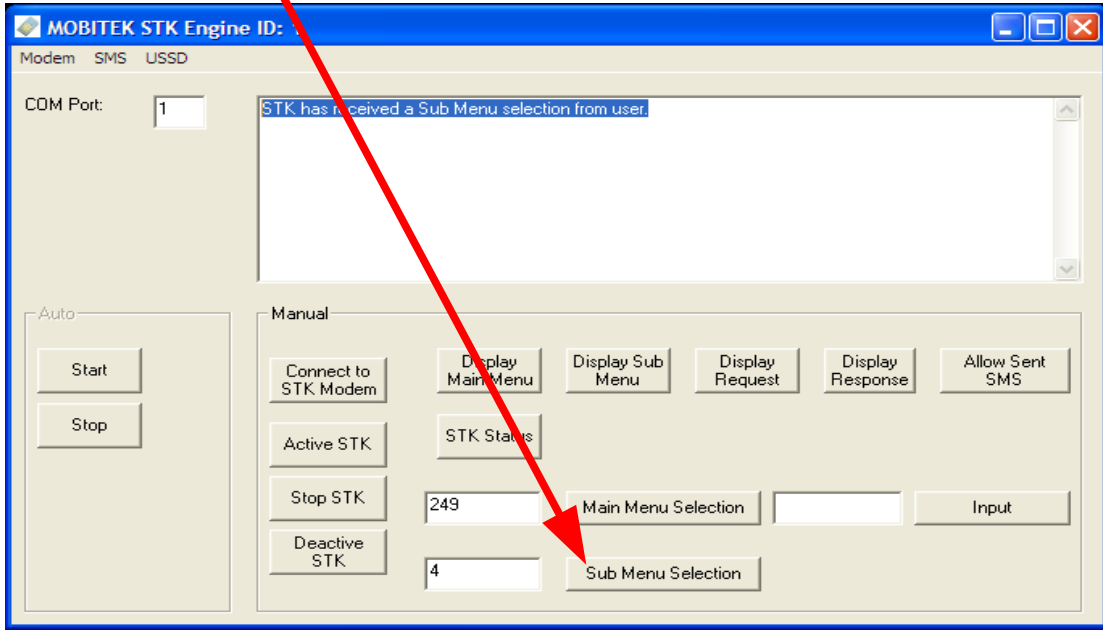
16. Click **Display Sub Menu** and choose either one menu from list. Type the number menu into text Sub Menu Selection.



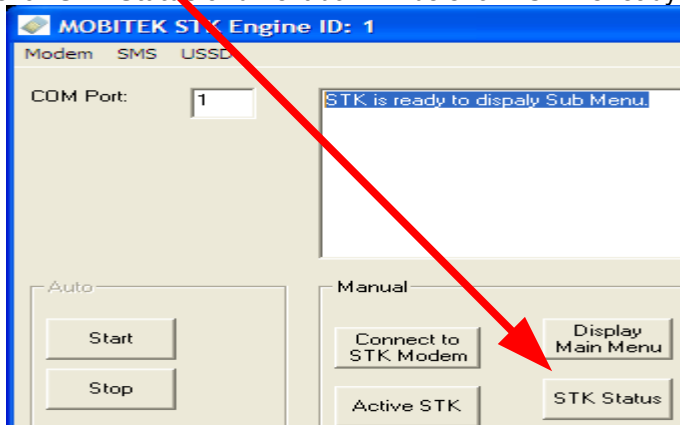
17. Write the number in "test.ini" file



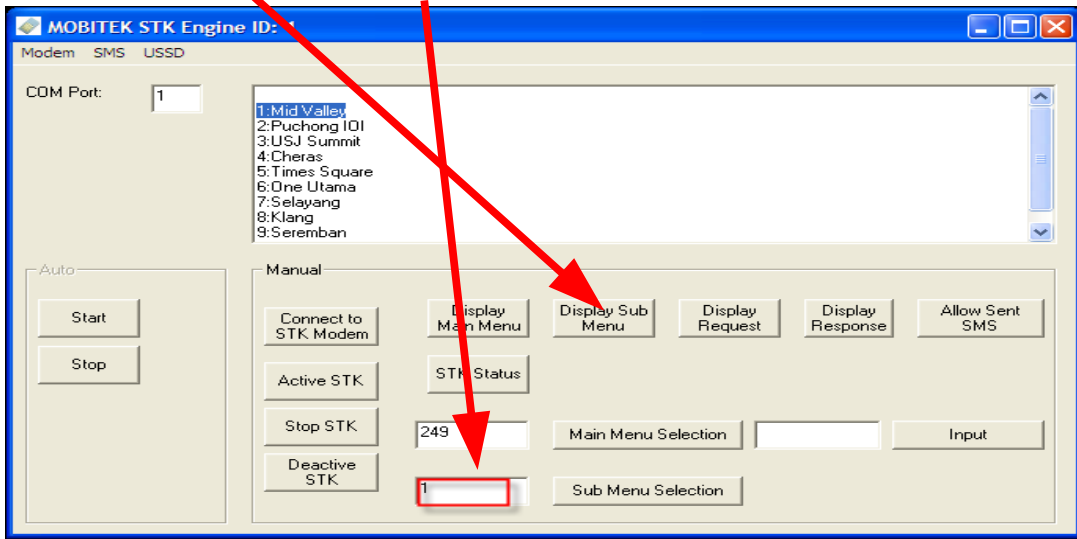
18. Click **Sub Menu Selection** and Text box will be show “STK has received a Sub Menu Selection from user”.



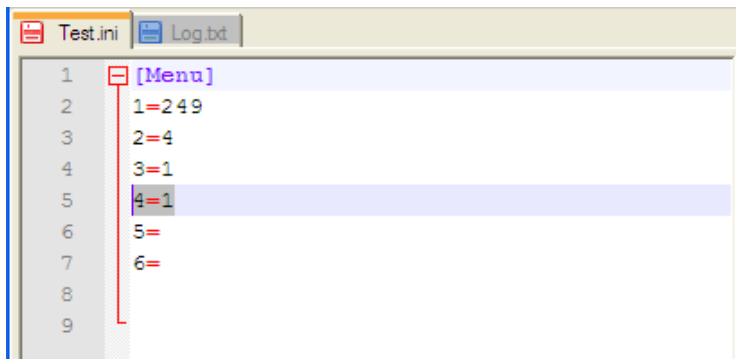
19. Click **STK Status** and Text box will be show “STK is ready to display sub menu.”



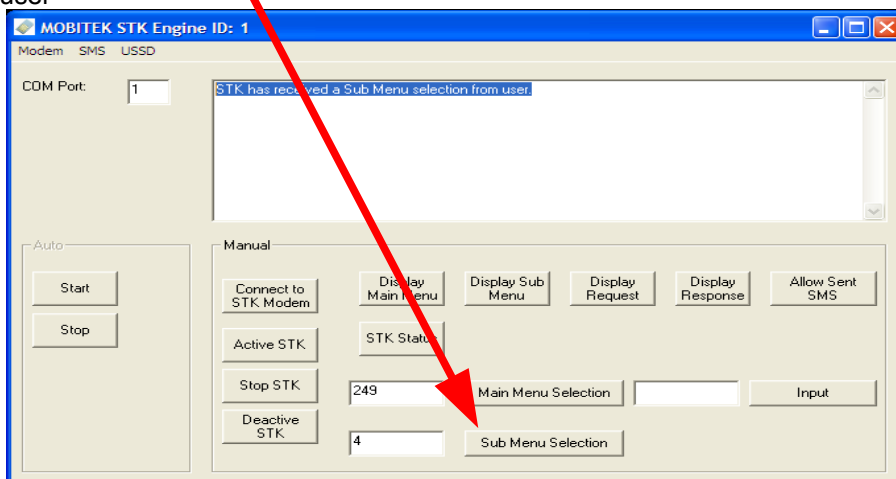
20. Click **Display Sub Menu** and choose either one menu from list. Type the number menu into text Sub Menu Selection.



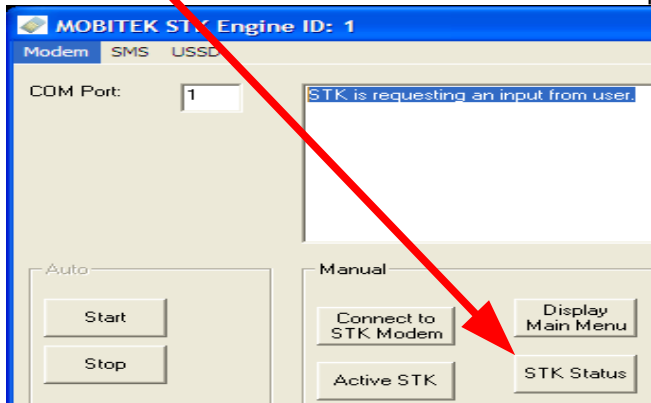
21. Write the number in "test.ini" file



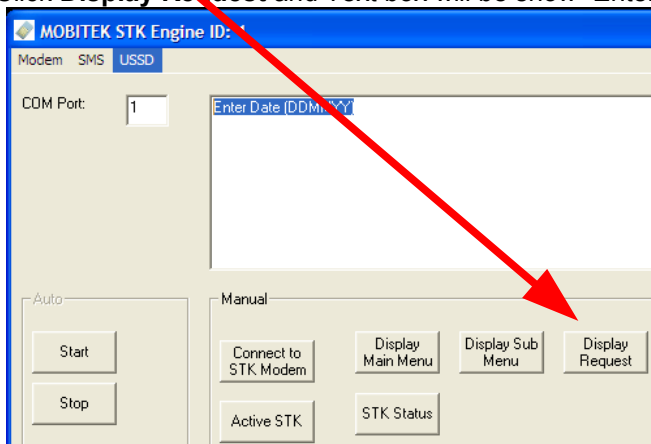
22. Click **Sub Menu Selection** and Text box will be show "STK has received a Sub Menu selection from user"



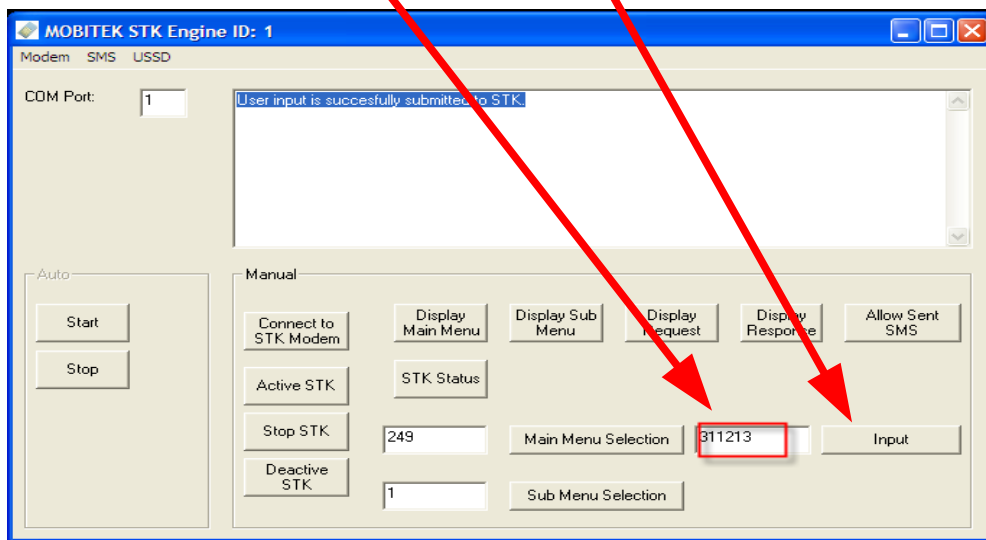
23. Click **STK Status** and Text box will be show “STK is requesting an input from user.”



24. Click **Display Request** and Text box will be show “Enter Date (DDMMYY)”

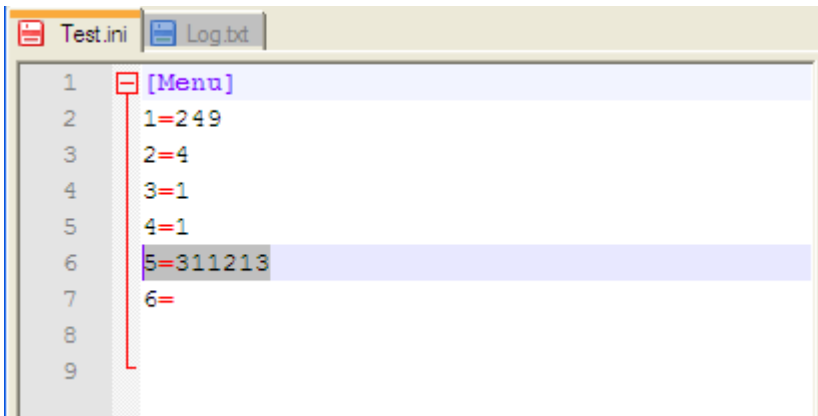


25. Enter the Date into **input text** and click **input** and Text box will be show “user input is successfully

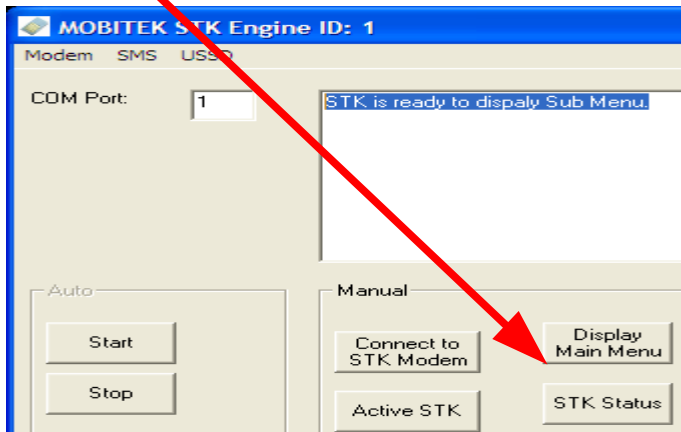


submitted to STK.”

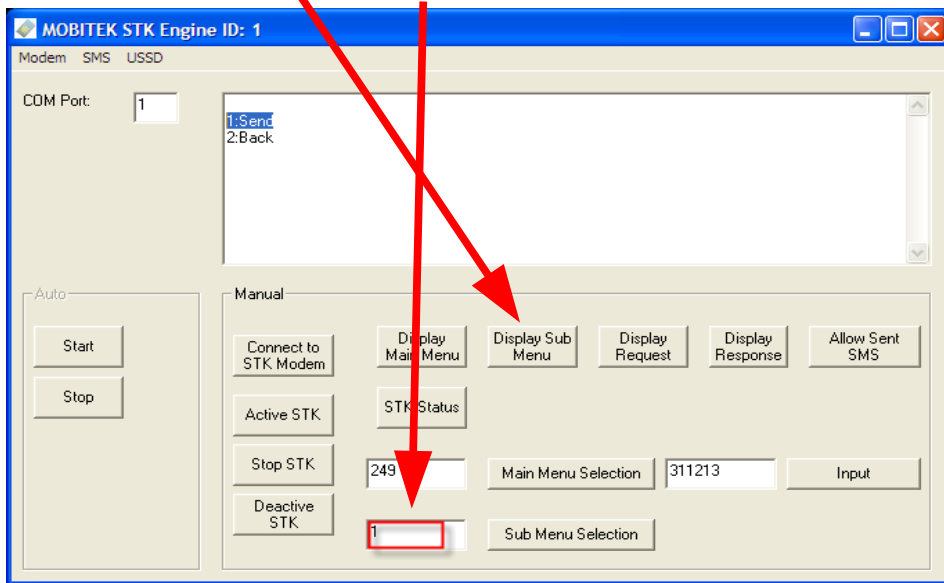
26. Write the number in “test.ini” file



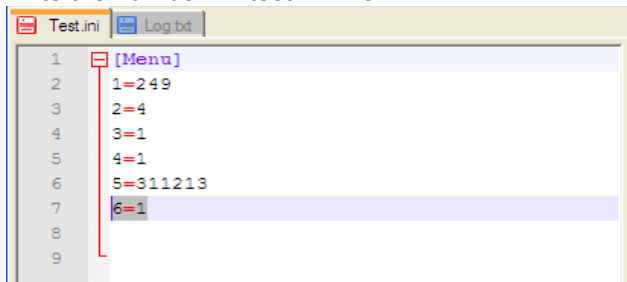
27. Click **STK Status** and Text box will be show “STK is requesting an input from user.”



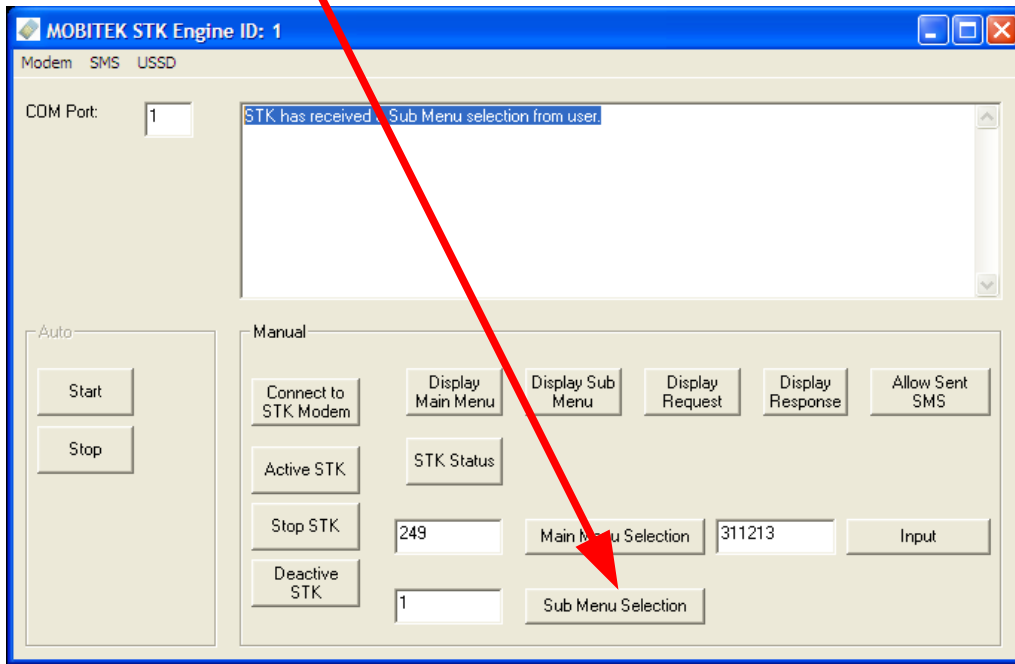
28. Click **Display Sub Menu** and choose either one menu from list. Type the number menu into text Sub Menu Selection.



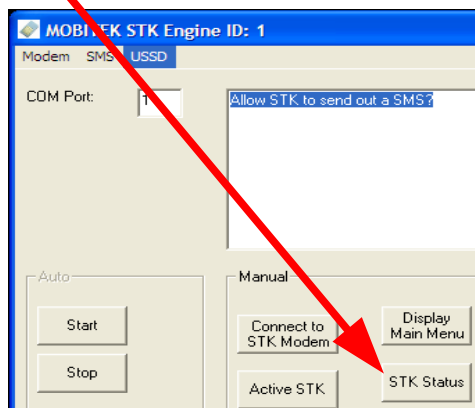
29. Write the number in "test.ini" file



30. Click **Sub Menu Selection** and Text box will be show "STK has received a Sub Menu Selection from user".

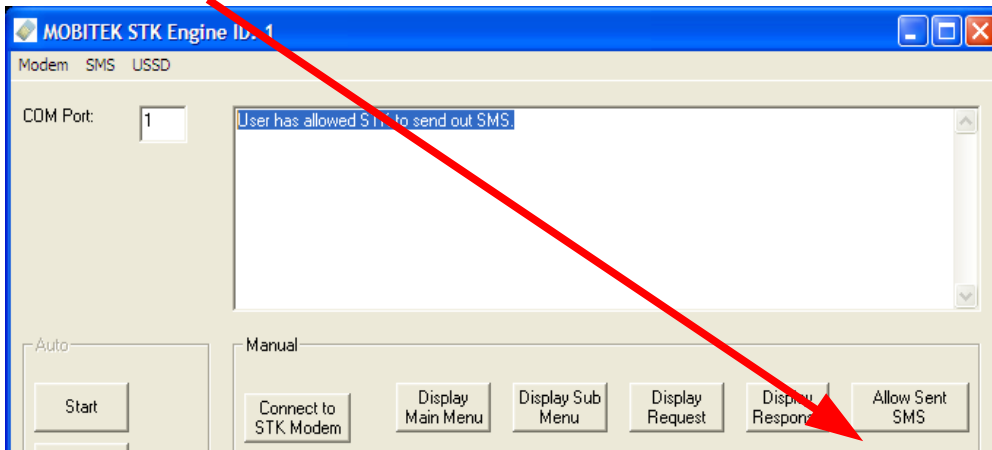


31. Click **STK Status** and Text box will be show "Allow STK to send out a SMS?".

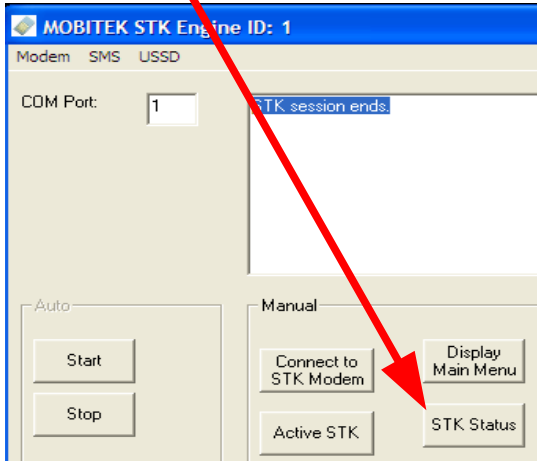




32. Click **Allow sent SMS** and Text box will be show “User has allowed STK to send out SMS.”



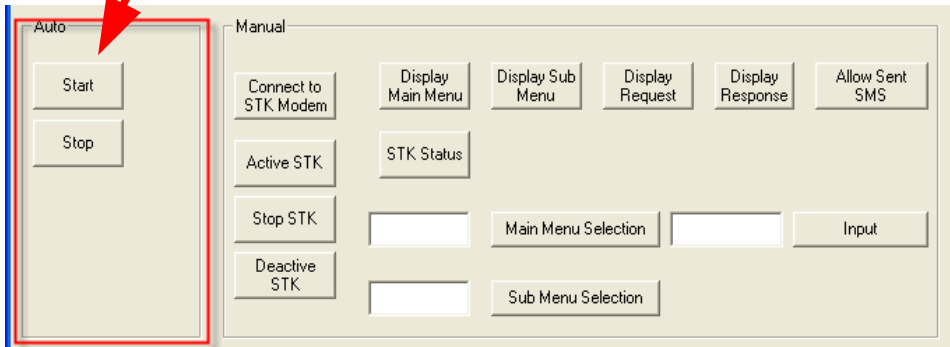
33. Click **STK Status** and Text box will be show “STK session ends.”



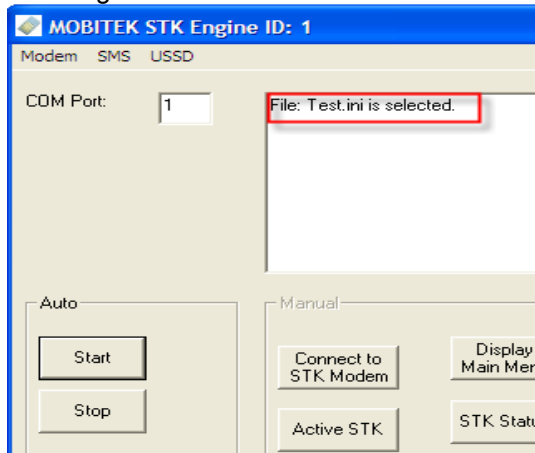
34. Save the updating “.ini” file that you create.

35. To using auto, make sure that have “test.ini” file in  
(C:/Program Files/MOBITEK/New)

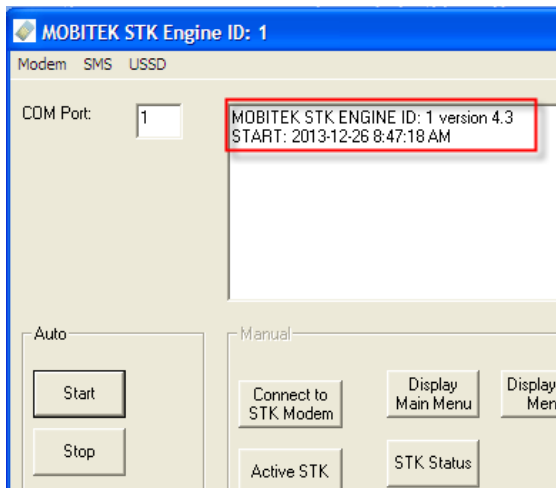
Click **Start**.



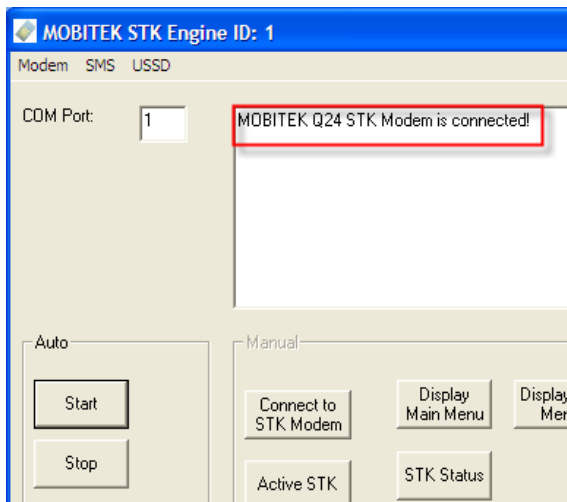
36. STK Engine will be selected the “.ini” file.



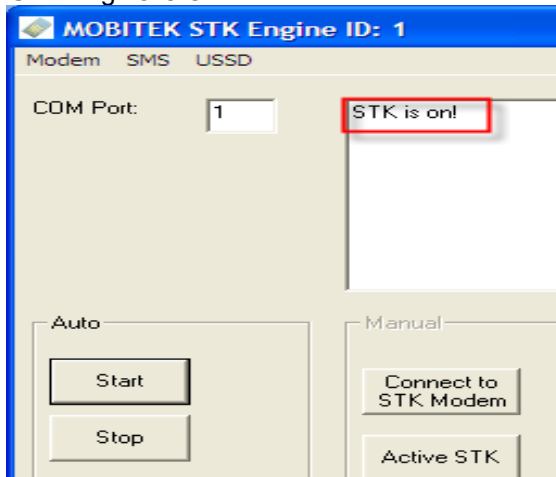
37. STK Engine will be started.



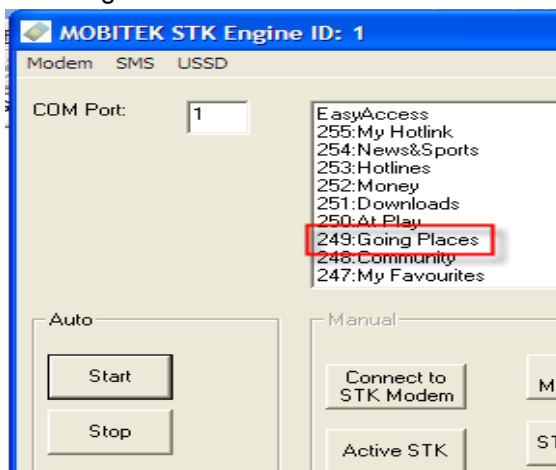
38. Mobitek STK Engine is connected.



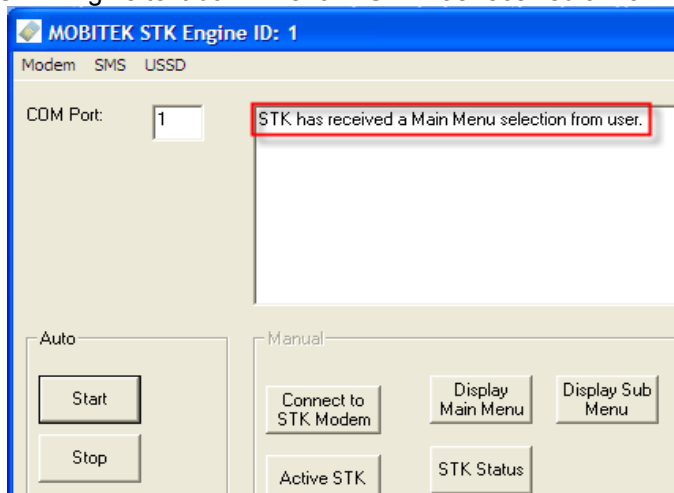
39. STK Engine is On!



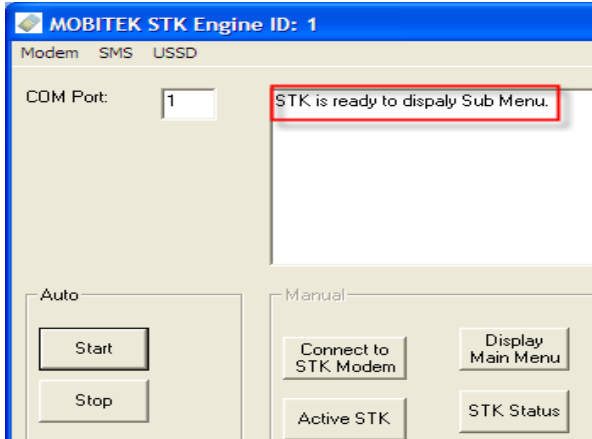
40. STK Engine will be selected the Main Menu based on the “.ini” file.



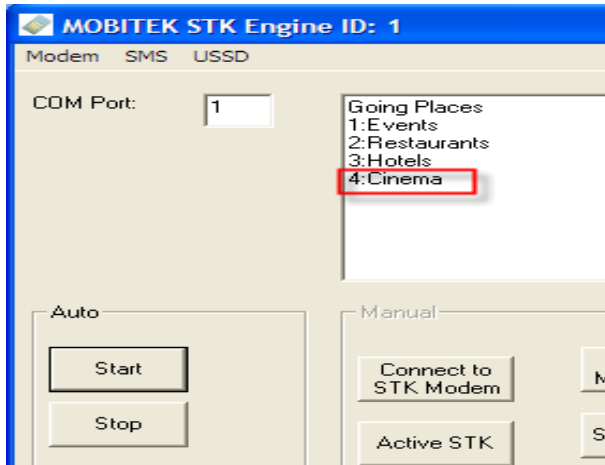
41. STK Engine text box will show “STK has received a Main Menu selection from user”



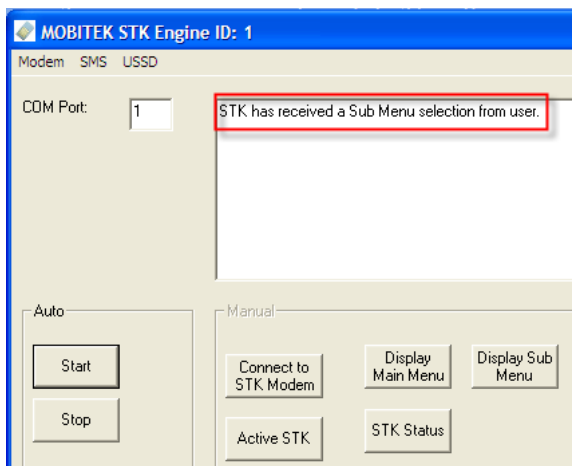
42. STK Engine text box will show “STK is ready to display sub menu”



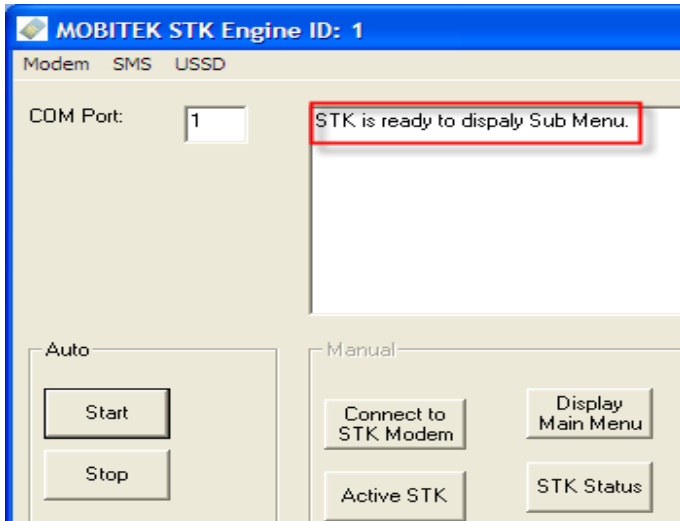
43. STK Engine will be selected the sub Menu based on the “.ini” file.



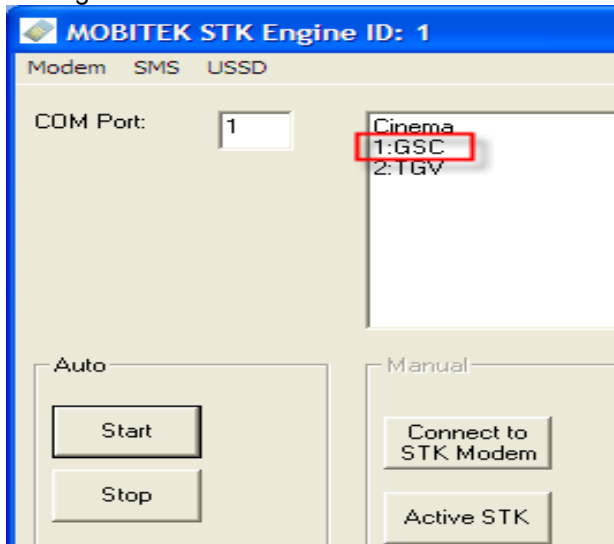
44. STK Engine text box will show “STK has received a Sub Menu selection from user”



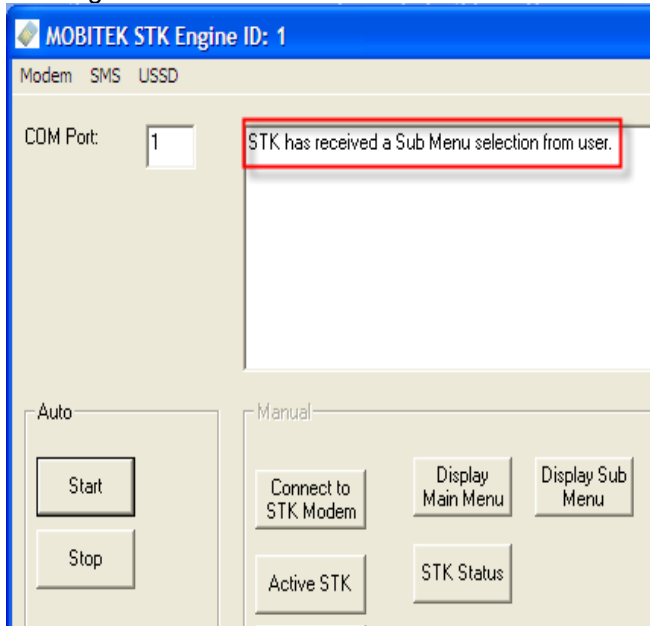
45. STK Engine text box will show “STK is ready to display sub menu”



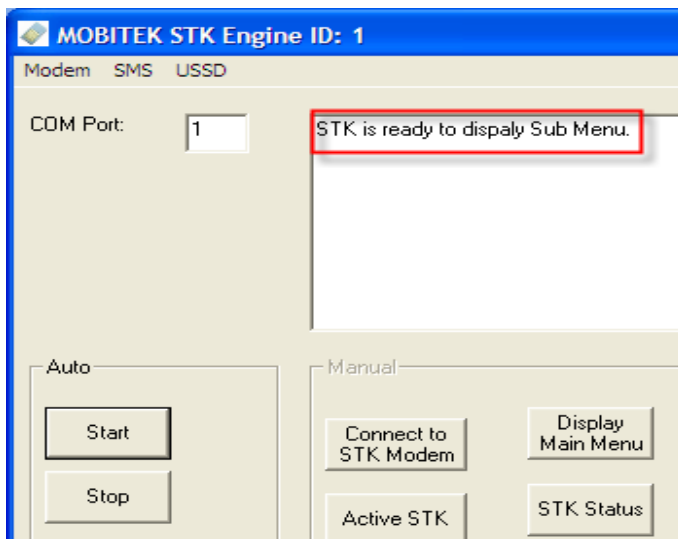
46. STK Engine will be selected the sub Menu based on the “.ini” file.



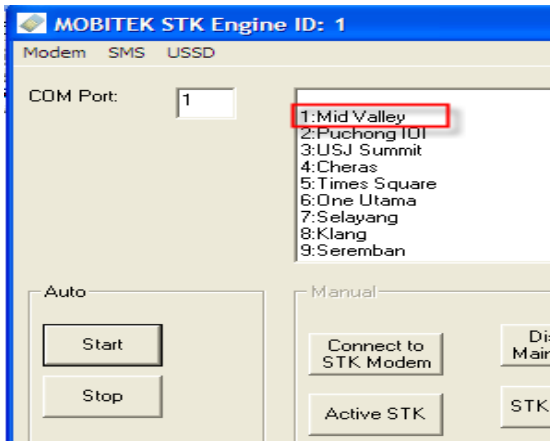
47. STK Engine text box will show “STK has received a Sub Menu selection from user”



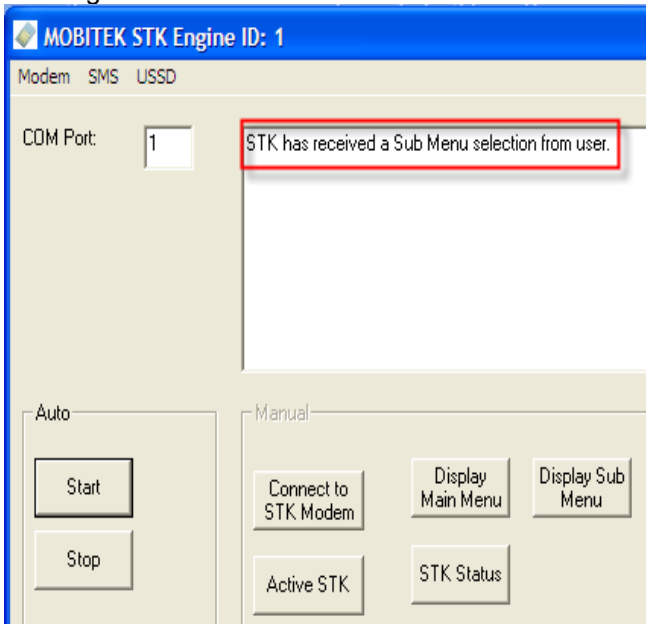
48. STK Engine text box will show “STK is ready to display sub menu”



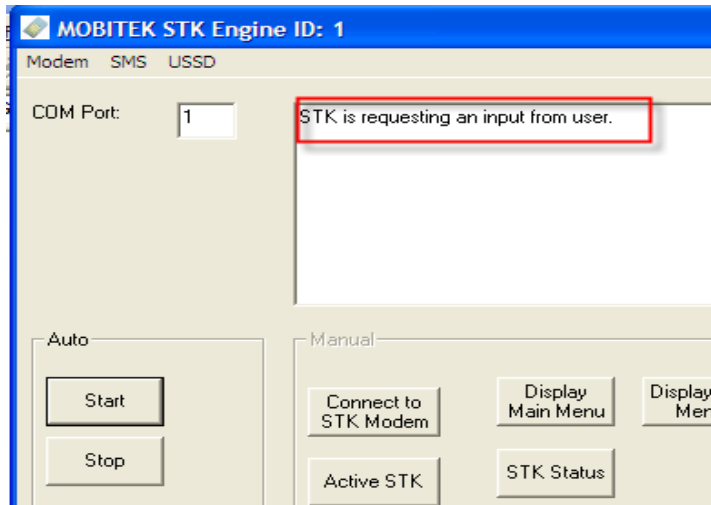
49. STK Engine will be selected the sub Menu based on the “.ini” file.



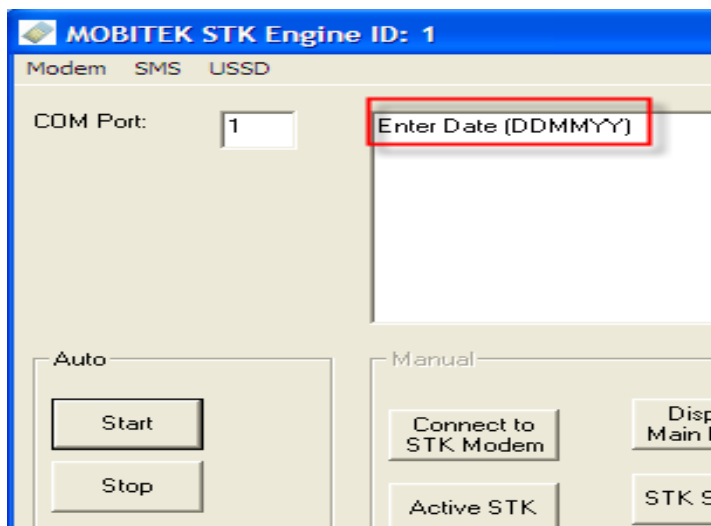
50. STK Engine text box will show “STK has received a Sub Menu selection from user”



- 51. STK Engine text box will show “STK is requesting an input from user” and auto click **Display request.**

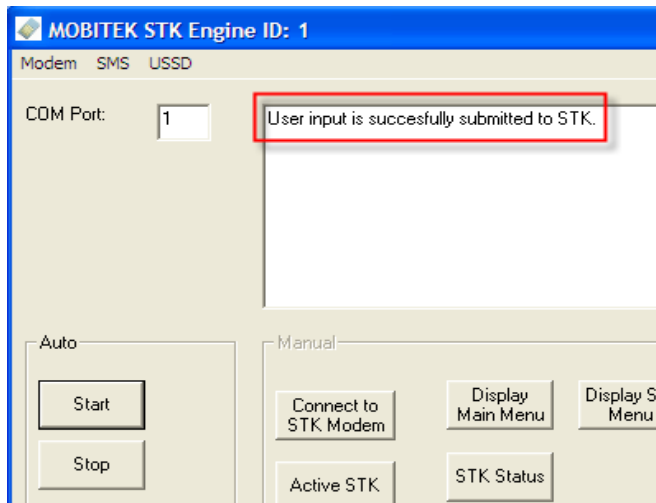


- 52. STK Engine text box will show “Enter DDMYY” and STK Engine will enter the date based on the “.ini” file.

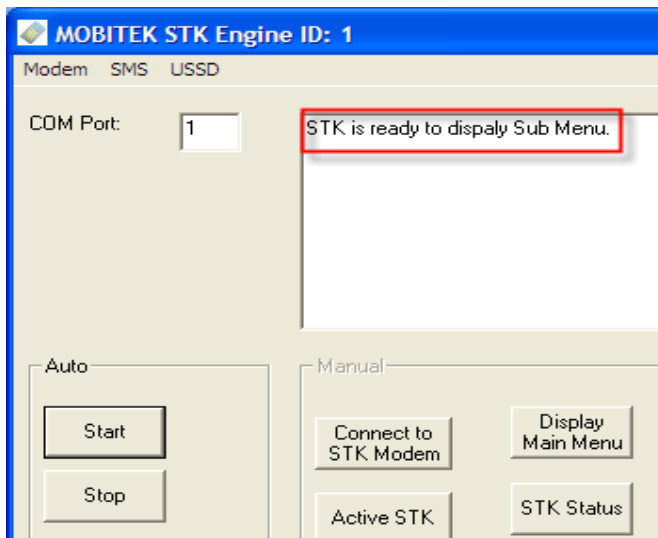




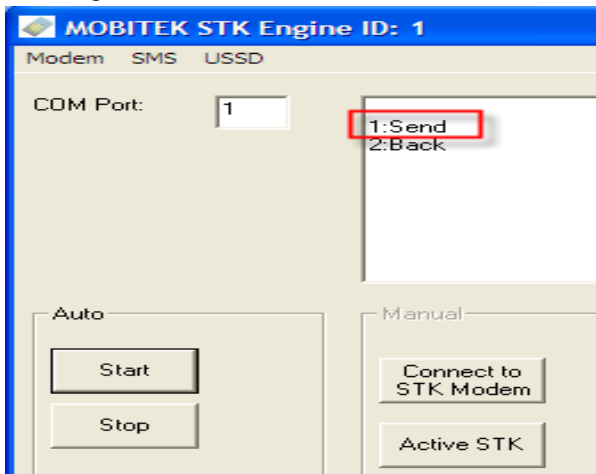
53. STK Engine text box will show “User input is successfully submitted to STK”



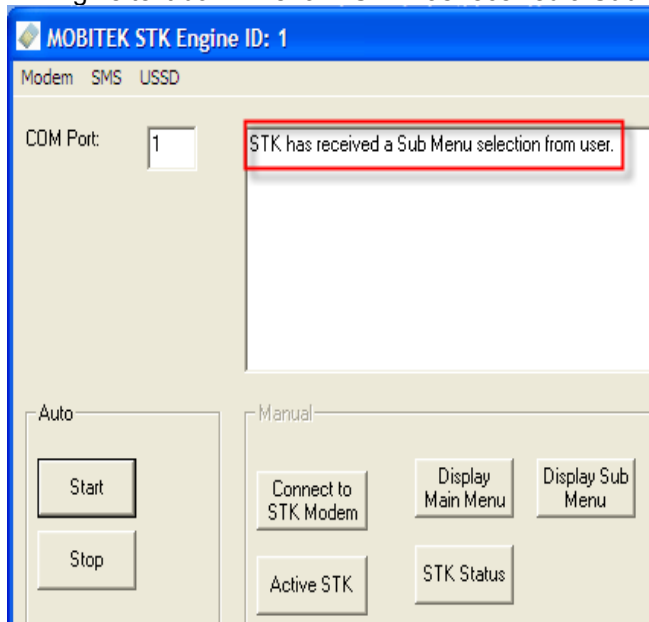
54. STK Engine text box will show “STK is ready to display sub menu”



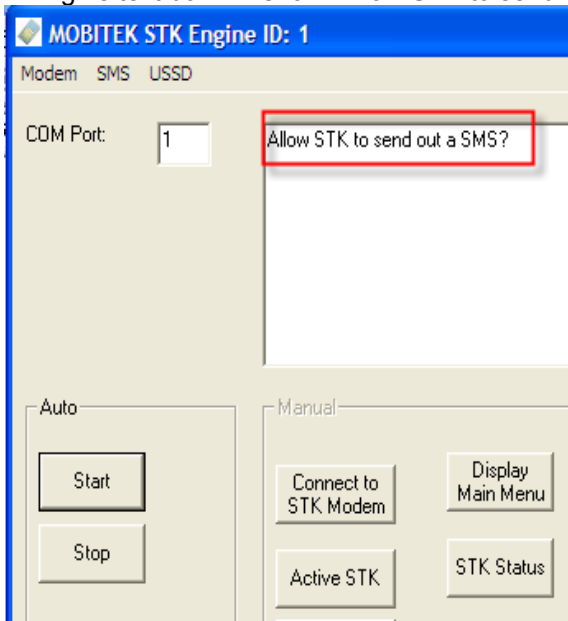
55. STK Engine will be selected the sub Menu based on the “.ini” file.



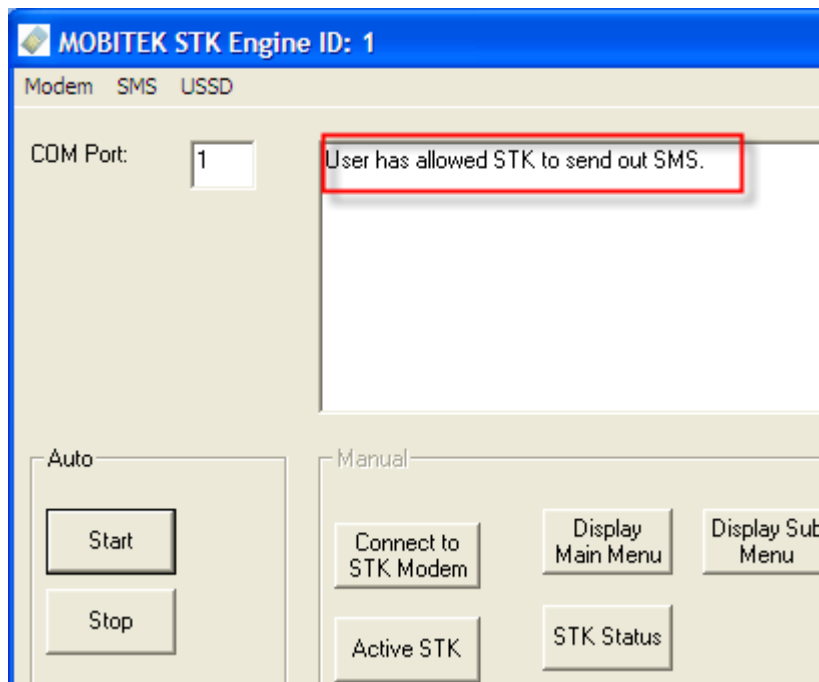
56. STK Engine text box will show “STK has received a Sub Menu selection from user”



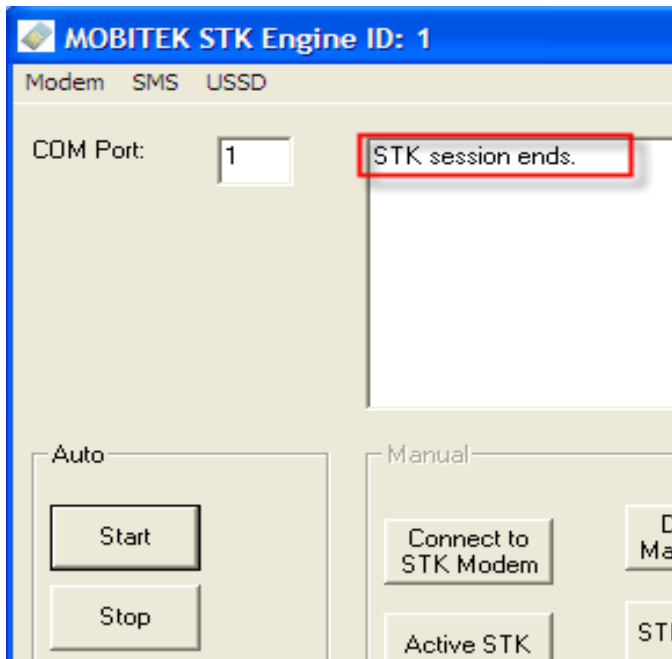
57. STK Engine text box will show “Allow STK to send out a SMS?”



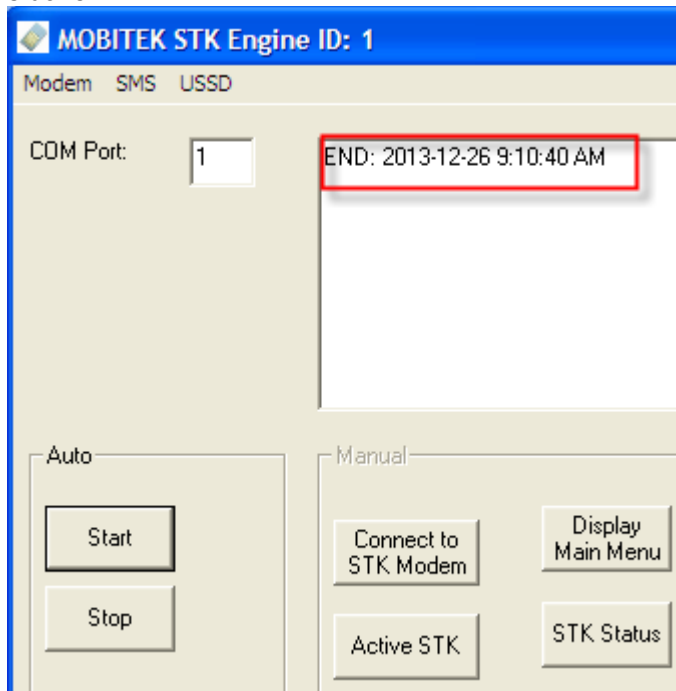
58. STK Engine will be selected “Allow Sent SMS” and STK Engine text box will show “User has allowed STK to send out SMS”



59. STK Engine text box will show “STK session ends”



60. STK Engine is End. The “.ini” file will move to (C:/Program Files/MOBITEK/Done) after the everything is done.



61. Click **stop** and the text box will show “MOBITEK STK Engine is stopped”

