

# **MOBITEK™** e-Mail to SMS Converter version 2.2

## Manual for System Integrator

---

### **Table of Contents**

1. MANUAL REVISION HISTORY.....	2
2. COPYRIGHT.....	2
3. TRADEMARK.....	2
4. DISCLAIMER.....	2
5. ACKNOWLEDGEMENT.....	2
6. INTRODUCTION.....	3
7. HOW IT WORKS?.....	3
8. RELEASE NOTE.....	3
9. BENEFITS.....	3
10. LIMITATIONS.....	3
11. SYSTEM REQUIREMENTS.....	4
12. LICENCE AGREEMENT.....	4
13. INSTALLATION GUIDE.....	4
14. APPENDIX.....	5

## 1. MANUAL REVISION HISTORY

<b>EDITION</b>	<b>ISSUED DATE</b>	<b>REMARK</b>
1 <sup>st</sup>	16 <sup>th</sup> of August, 2007	Draft manual released Version 1.0 released
2 <sup>nd</sup>	12 <sup>th</sup> of May, 2010	Version 2.0 released
3 <sup>rd</sup>	26 <sup>th</sup> of August, 2010	Version 2.2 release

## 2. COPYRIGHT

**Copyright © 2007 - 2010 MOBITEK System Sdn. Bhd. All rights reserved.**

No part of this document may be reproduced, distributed, stored in a retrieval system or translated into any language, in any form or by any means, electronic, mechanical, magnetic, optical, photocopying, manual or otherwise, without the prior written permission of MOBITEK System Sdn. Bhd.

## 3. TRADEMARK

**MOBITEK™** is a trademark belongs to MOBITEK System Sdn. Bhd.

## 4. DISCLAIMER

MOBITEK System Sdn. Bhd. (hereafter "MOBITEK") makes no representations or warranties with respect to the contents hereof and specifically disclaims any implied warranties of merchantability or fitness for any particular purpose.

Furthermore, MOBITEK reserves the right to revise this publication and to make changes from time to time in the contents hereof without obligation to notify any person of such revision or changes.

Trademarks and Registered Trademarks Products and product names mentioned in this document may be trademarks or registered trademarks of their respective owners.

## 5. ACKNOWLEDGEMENT

**MOBITEK™ e-Mail to SMS Converter version 1** is developed by Mr. Aizuddin Aizat B. Abdul Rahman, a student from MULTIMEDIA UNIVERSITY MALAYSIA.

## 6. INTRODUCTION

**MOBITEK™ e-mail to SMS Converter** is a *Windows* application that converts an incoming e-mail into a SMS, and send it out. This allows easy integration with a monitoring software via e-mail.

The monitoring software can be:-

1. network monitoring (e.g. [PRTG Network Monitor](#));
2. UPS monitoring (e.g. [Generex](#));
3. server monitoring (e.g. [PA Server Monitor](#));
4. SCADA software (e.g. [RealFlex](#)).

When a monitoring software detects a prescribe event, it will trigger a notification. That notification can be in the form of an e-mail, and that e-mail can be converted to SMS by **MOBITEK™ e-mail to SMS Converter**.

## 7. HOW IT WORKS?

1. Create a new e-mail account (POP3) e.g. [sms@abc.com](mailto:sms@abc.com)
2. On the monitoring software, configure an e-mail with these settings:-
  - (a) To: [sms@abc.com](mailto:sms@abc.com)
  - (b) Subject: (mobile number e.g. 0126868118; this field will be the recipient of SMS)
  - (c) Body: (this part will be converted to body of SMS)
3. Install both **MOBITEK™ Modem** and **MOBITEK™ e-mail to SMS Converter** on a any server/PC with internet access.
4. **MOBITEK™ e-mail to SMS Converter** will check the inbox of [sms@abc.com](mailto:sms@abc.com) on a 1 minute interval, and if there is a new e-mail, it will convert the body of e-mail into body of SMS, and send the e-mail to the mobile number specified on the subject of e-mail or to the mobile number specified in the setting.
5. e-mail that has been converted into SMS will not be removed from the inbox.

## 8. RELEASE NOTE

1. Version 2.0-beta: migrate away FreePOP component
2. Version 2.1-beta: Add SSL and port setting
3. Version 2.2-beta: Keep a log file

## 9. BENEFITS

1. Easy integration between monitoring software and SMS via e-mail.
2. No programming is required; only configuration is required.

## 10. LIMITATIONS

1. e-mail must be POP3; IMAP is not supported.
2. Body of e-mail must be in text; unicode (Chinese, Arabic) is not supported.

## 11. SYSTEM REQUIREMENTS

1. Server/PC running on *Windows* OS (32 bit) with internet access.
2. one dedicated e-mail account (POP3 only)
3. SIM card
4. **MOBITEK™ Modem, Type SGDK**
5. USB or Serial port for **MOBITEK™ Modem**.

## 12. LICENCE AGREEMENT

MOBITEK System Sdn. Bhd. grants you the right to use the **MOBITEK™ e-mail to SMS Converter** subject to the following terms and conditions:

1. **MOBITEK™ e-mail to SMS Converter** is Free Of Charge when **MOBITEK™ Modem** is purchased from MOBITEK. It is free from any registration, licensing or deployment fees. It may be deployed freely for commercial or non-commercial.
2. **MOBITEK™ e-mail to SMS Converter** must be used with **MOBITEK™ Modem** supplied by MOBITEK.
3. **MOBITEK™ e-mail to SMS Converter** is still in beta phase. Therefore, there will be some bugs and it is not recommended to use in a production or live environment.
4. You grant MOBITEK, without charge, the right to use, share and commercialize your feedback in any way and for any purpose
5. You have the ability to give feedback to MOBITEK by writing to support2007@mobitek.com.my
6. **MOBITEK™ e-mail to SMS Converter** is provided on "as-is" basis; without warranty of any kind, express, implied or otherwise; without any technical support.
7. MOBITEK may or may not provide any bug fixes or patch file for **MOBITEK™ e-mail to SMS Converter**.
8. MOBITEK must not be held liable for any data loss, damages, loss of profits or any other kind of losses while using or misusing **MOBITEK™ e-mail to SMS Converter**.

### 13. INSTALLATION GUIDE

1. Install **MOBITEK™ Modem** (refer to installation guide in the CD).
2. Select **MOBITEK™ e-mail to SMS Converter** from the SMS Gateway Development Kit CD, run the "setup.exe" to install.
3. Overview of the main interface (refer to illustration 1).

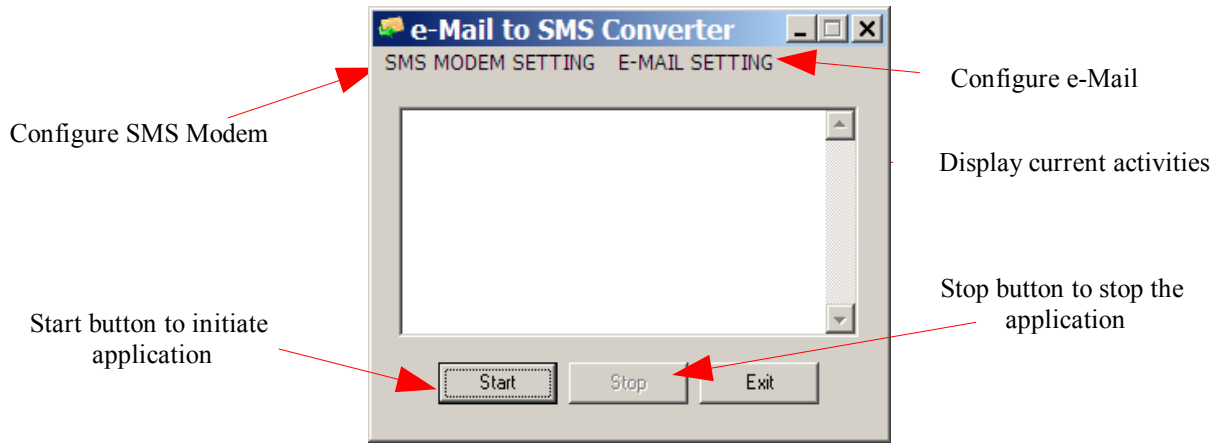


Illustration 1: Main Interface

4. Configure **MOBITEK™ Modem** at "SMS Modem Setting" refer to illustration 2.

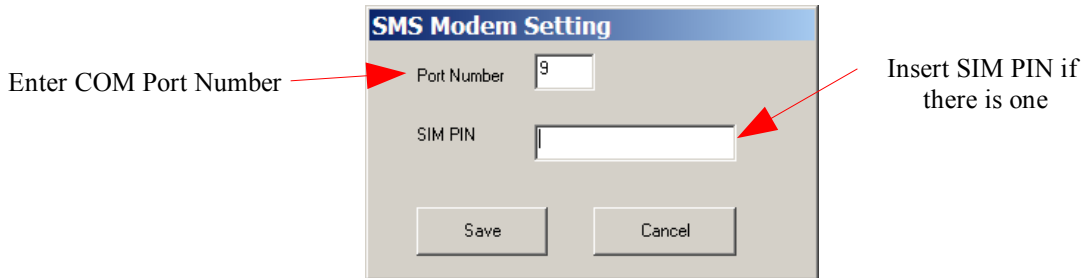


Illustration 2: SMS Modem Setting

5. Configure **MOBITEK™ e-mail to SMS Converter** at “E-mail Setting”.

Enter the e-mail account details.  
If SSL is used, then check it  
and enter the port number

Check it if you want  
to specify the mobile number  
at the subject of e-mail

Enter the mobile number,  
SMS will be send to that number;  
leave it blank if you want  
the subject of e-mail to be  
the mobile number

Specify the maximum number  
of SMS

Illustration 3: E-mail Setting

## 14. CONFIGURATION GUIDE FOR E-MAIL SETTING

**E-mail Setting**

POP3 Setting

Server: mail.mobitek.com.my

Port Number:   SSL

User Name: sms@mobitek.com.my

Password:

Convert these to SMS

Sender of e-mail

Subject of e-mail

Date of e-mail

Body of e-mail

Send the SMS ...

to this number: 0123344111

or / and to the number stated in the "Subject" of the e-mail.

If message is longer than 160 characters, then maximum number/parts of SMS is 1

Save Cancel

With these configuration, the **MOBITEK™ e-mail to SMS Converter** will connect to the mail server "mail.mobitek.com.my" with user name and password. The connection is without SSL.

When there is a new e-mail in the inbox, **MOBITEK™ e-mail to SMS Converter** will copy the contents from sender field and body field of the e-mail, and paste as the message content of SMS. E.g.

alert@mobitek.com.my  
Power interrupted, UPS running on battery

The recipient of the SMS is "0123344111".

If the total length of e-mail is more than 160 characters, than only 1 SMS is send.

Illustration 4: Configuration Example no. 1

**E-mail Setting**

POP3 Setting

Server: mail.mobitek.com.my

Port Number: 600  SSL

User Name: sms@mobitek.com.my

Password: \*\*\*\*\*

Convert these to SMS

Sender of e-mail

Subject of e-mail

Date of e-mail

Body of e-mail

Send the SMS ...

to this number: [ ]

or / and to the number stated in the "Subject" of the e-mail.

If message is longer than 160 characters, then maximum number/parts of SMS is 2

Save Cancel

With these configuration, the **MOBITEK™ e-mail to SMS Converter** will connect to the mail server "mail.mobitek.com.my" with user name and password. The connection has SSL and using port 600.

When there is a new e-mail in the inbox, **MOBITEK™ e-mail to SMS Converter** will copy the contents from body field of the e-mail, and paste as the message content of SMS. E.g. Power interrupted, UPS running on battery

The recipient of the SMS is specified on the subject field of the e-mail.

If the total length of e-mail is more than 160 characters, then the maximum number of SMS being send is 2 SMS only.

Illustration 5: Configuration Example no. 2